

GENERAL NOTES

ALL CONSTRUCTION SHALL BE IN ACCORDANCE WITH THE REQUIREMENTS SET FORTH BY IBC 2021 EDITION AND SHALL CONFORM TO ALL OTHER APPLICABLE MUNICIPAL, STATE, AND FEDERAL REGULATIONS INCLUDING THE ILLINOIS ACCESSIBILITY CODE (2018) AND THE AMERICANS WITH DISABILITIES ACT.

A. GENERAL NOTES

- ALL CONTRACTORS ARE REQUIRED TO VISIT THE SITE AND BE KNOWLEDGEABLE REGARDING EXISTING CONDITIONS AND THEIR EFFECT ON THE PROPOSED WORK. CONTRACTORS SHALL VERIFY AND BE RESPONSIBLE FOR ANY CONDITIONS REQUIRING MODIFICATION BEFORE PROCEEDING WITH THE PROJECT.
- NOTIFY THE OWNER'S REPRESENTATIVE A MINIMUM OF 72 HOURS PRIOR TO THE INTERRUPTION OF ANY UTILITY.
- PROTECT AND KEEP IN SERVICE ACTIVE UNDERGROUND UTILITIES, PIPES, OR CONDUITS, WHETHER INDICATED ON THE DRAWINGS OR NOT, UNLESS SPECIFICALLY CALLED FOR TO BE REMOVED, RELOCATED, OR DISCONNECTED AND ABANDONED.
- CONTRACTORS AND SUBCONTRACTORS SHALL COORDINATE THEIR WORK WITH THAT OF OTHER TRADES.
- NO WORK WILL BE PERMITTED TO BE INSTALLED WITHOUT RECEIPT AND SUBSEQUENT REVIEW OF FULL AND COMPLETE SUBMITTALS BY THE ARCHITECT/ENGINEER.
- DO NOT SCALE DRAWINGS. DIMENSIONS INDICATED TAKE PRECEDENCE OVER SCALE.
- VERIFY ALL DIMENSIONS AND ELEVATIONS IN THE FIELD. WHERE DISCREPANCIES ARE FOUND BETWEEN DIMENSIONS OR ELEVATIONS SHOWN AND ACTUAL FIELD CONDITIONS, NOTIFY ARCHITECT/ENGINEER.
- WHERE CONFLICTS MAY EXIST BETWEEN THE REQUIREMENTS OF PORTIONS OF THE CONTRACT DOCUMENTS, THE GREATER QUANTITY, HIGHER QUALITY OR MORE STRINGENT REQUIREMENT SHALL GOVERN. THEREFORE, BY EXECUTING A CONTRACT FOR CONSTRUCTION, THE CONTRACTOR AGREES THAT, IF IT RAISED NO QUESTIONS REGARDING SUCH CONFLICTS DURING THE BIDDING PROCESS, AND IN THE ABSENCE OF A CLARIFYING ADDENDUM ISSUED DURING THE BIDDING PROCESS, IT HAS VOLUNTEERED TO COMPLY WITH THE MORE EXPENSIVE REQUIREMENT AS PART OF ITS BASE BID AND IS NOT ENTITLED TO ANY ADDITIONAL COMPENSATION TO RESOLVE THE CONFLICT.
- THE CONTRACT DOCUMENTS REQUIRE THE CONTRACTOR TO FURNISH AND INSTALL COMPLETE PRODUCTS, SYSTEMS AND SERVICES. BY EXECUTING A CONTRACT FOR CONSTRUCTION, THE CONTRACTOR AGREES THAT THE DRAWINGS SET FORTH THE DESIGN INTENT AND, THEREFORE, MAY NOT EXPRESSLY DEPICT EVERY LENGTH, SEGMENT, PIECE, PART, COMPONENT OR UNIT OF A PRODUCT, SYSTEM OR SERVICE. THE CONTRACTOR FURTHER AGREES THAT, AS PART OF ITS BID, IT MUST FURNISH AND INSTALL EVERY LENGTH, SEGMENT, PIECE, PART, COMPONENT OR UNIT OF A PRODUCT, SYSTEM OR SERVICE AND, CONSEQUENTLY, THE CONTRACTOR IS NOT ENTITLED TO ANY ADDITIONAL COMPENSATION FOR ANY LENGTH, SEGMENT, PIECE, PART COMPONENT OR UNIT OF A PRODUCT, SYSTEM OR SERVICE BECAUSE IT IS NOT EXPRESSLY DEPICTED HEREIN.

B. MISCELLANEOUS AND DEMOLITION NOTES

- APPLY APPROPRIATE & COMPATIBLE SEALANT MATERIALS AS REQUIRED TO SEPARATE DISSIMILAR METALS. FILL GAPS IN EXISTING ASSEMBLIES OR WHERE NEW AND EXISTING ASSEMBLIES MEET OR WHERE OTHERWISE REQUIRED BY THE SPECIFICATIONS.
- BRING ANY UNFORESEEN OR CONFLICTING CONDITIONS TO THE IMMEDIATE ATTENTION OF THE ARCHITECT/ENGINEER BEFORE PROCEEDING WITH THE WORK.
- REPAIR, PATCH, OR REPLACE FINISH MATERIALS OR VISIBLE ASSEMBLIES THAT ARE SOILED, CUT OR DAMAGED IN ANY FASHION DURING THE COURSE OF THE WORK. PERFORM PATCHING SUCH THAT EDGES BLEND INTO CONTIGUOUS SURFACES SMOOTHLY, MATCHING TEXTURE AND COLOR OF ADJACENT SURFACES.

STANDARD ABBREVIATIONS

@	AT	EXIST	EXISTING	PC	PIECE
A B	ANCHOR BOLT	EXP	EXPANSION	PL	PLATE
ABR	ABRASIVE	EXP CONST	EXPOSED CONSTRUCTION	PLAM	PLASTIC LAMINATE(D)
ACP	ACOUSTICAL CEILING PANEL	FD	FLOOR DRAIN	PL	PLASTER
ACT	ACOUSTICAL CEILING TILE	FDN	FOUNDATION	PLB'G	PLUMBING
AFP	ABOVE FINISH FLOOR	FNDN	FOUNDATION	PLB'G CONTR	PLUMBING CONTRACTOR
AFG	ABOVE FINISH GRADE	FE	FIRE EXTINGUISHER	PLYWD	PLYWOOD
ACOU	ACOUSTIC	FEC	FIRE EXTINGUISHER CABINET	PNT	PAINT
ADDN	ADDITION	FHC	FIRE HOSE CABINET	PO	PRECAST (CONCRETE) OPENING
ADDL	ADDITIONAL	FIN	FINISH	PVC	POLYVINYL CHLORIDE
ADJ	ADJACENT OR ADJUSTABLE	FLR	FLOOR	PL(-1)	GYPSUM PLASTER (TYPE)
AL	ALUMINUM	FRT	FIRE RETARDANT TREATED	R	RISER
ALT	ALTERNATE	FUR CHNL	FURRING CHANNEL	R OR RAD	RADIUS
ANCHR	ANCHOR	FTG	FOOTING	RD	ROOF DRAIN
AP	ACCESS PANEL	GA	GAUGE	RO	ROUGH OPENING
APPROX	APPROXIMATE	GALV	GALVANIZED	RF (1)	RUBBER FLOORING (TYPE)
ASPH	ASPHALT	GEN CONTR	GENERAL CONTRACTOR	RH	RIGHT HAND
AUTO	AUTOMATIC	GC	GENERAL CONTRACTOR	REF	REFERENCE
AVG	AVERAGE	GL	GLASS	REF	REFERENCE
BSMT	BASEMENT	GYP BD(-1)	GYPSUM WALL BOARD (TYPE)	REF	REFERENCE
B	BOTTOM OF	GYP PL(-1)	GYPSUM PLASTER (TYPE)	REINF	REINFORCE/REINFORCING/REINFORCED REQD
BD	BOARD	H	HIGH	RM	ROOM
BET	BETWEEN	HD	HEAVY DUTY OR HARD	SF	SQUARE FOOT
BIT	BITUMINOUS	HDNR	HARDENER	SI	SQUARE INCH
BLDG	BUILDING	HD WD(-1)	HARD WOOD (TYPE)	SK	SINK
BLKG	BLOCKING (WOOD)	HDWR	HARDWARE	SS	STAINLESS STEEL
BM	BEAM	HT	HEIGHT	SSK	SERVICE SINK
B.M.	BENCH MARK	HM	HOLLOW METAL	SQ	SQUARE
BRG	BEARING	HP	HIGH POINT	SCHED	SCHEDULE
BRKT	BRACKET	HORIZ	HORIZONTAL	SEAL/HDNR	SEALER/HARDENER
BRK	BRICK	HTG	HEATING	SEC	SHEET
BT STL PL	BENT STEEL PLATE	HVAC	HEATING/VENTILATING/AIR CONDITIONING	SHT	SHEET
C	CONSTRUCTION OR CONTRACTION JOINT	IN	INCH	SIM	SIMILAR
CAB	CABINET	INCH	INSIDE DIAMETER	SOG	SLAB ON GRADE
CEM PL(-1)	CEMENT PLASTER (TYPE)	INCL	INCLUDE/INCLUDING/INCLUDED	SQC(S)	SPECIFICATION(S)
CT PAV(-1)	CERAMIC PAVER TILE (TYPE)	INSUL	INSULATION/INSULATING/INSULATED	SPC'G	SPACING
CIP	CAST-IN-PLACE	JOINT	JOINT	SPKR	SPEAKER
CLG	CEILING	KD	KNOCK DOWN	STD	STANDARD
CLR	CLEAR	L	LONG	STD WT	STANDARD WEIGHT
C.O.	CLEAN-OUT	LAM	LAMINATE/LAMINATING/LAMINATED	STL	STEEL
CMU	CONCRETE MASONRY UNIT	LAV	LAVATORY	STRUCT	STRUCTURE OR STRUCTURAL
COL	COLUMN	LH	LEFT HAND	SUSP	SUSPEND(ED)
COMB	COMBINATION	LP	LOW POINT	SYM	SYMMETRICAL
COMP	COMPRESSIBLE OR COMPACTED	LT WT	LIGHTWEIGHT	T	TREAD
CONC	CONCRETE	LL	LIVE LOAD	T&G	TONGUE AND GROOVE
CONC OPNG	CONCRETE OPENING	LLH	LONG LEG HORIZONTAL	T/BEAM	TOP OF
COND	CONDITION	LLV	LONG LEG VERTICAL	T/BEAM	TOP OF BEAM
CONT	CONTINUOUS	LVR	LONG LEG VERTICAL	TIC	TOP OF CURB
CONTR	CONTRACT(OR)	Louver	LOUVER	T/FNDN	TOP OF FOUNDATION
CPT(-1)	CARPET (TYPE)	MO	MASONRY OPENING	T/STL	TOP OF STEEL
CT(-1)	CERAMIC TILE (TYPE)	MT	METAL THRESHOLD	T/WALL	TOP OF WALL
CTR	COUNTER	MAS	MASONRY	TB (4)	TACKBOARD (LENGTH IN FEET)
CTR SK	COUNTER SINK	MATL	MATERIAL	T/MAS	TOP OF MASONRY
CTRS	CENTER(S)	MAX	MAXIMUM	TYP	TYPICAL
CUH	CABINET UNIT HEATER	MB (16)	MARKERBOARD (LENGTH IN FEET)	UD	(WINDOW) UNIT DIMENSION
CUV	CABINET UNIT VENTILATOR	MECH	MECHANICAL	UNO	UNLESS NOTED OTHERWISE
DIA	DIAMETER	MECH CONTR	MECHANICAL CONTRACTOR	VBC	VINYL BASE COVED
DIM	DIMENSION	MFR	MANUFACTURER	VBS	VINYL BASE STRAIGHT
DN	DOWN	MIN	MINIMUM OR MINUTE(S)	VCT	VINYL COMPOSITION TILE
DO	DOOR OPENING	MISC	MISCELLANEOUS	VEN PL (1)	VENEER PLASTER (TYPE)
DR	DOOR	MSB	MOP SERVICE BASIN (SINK)	VERT	VERTICAL
DWGS	DRAWINGS	MT(D)	MOUNT(ED)	W	WIDE OR WIDTH
DTL	DETAIL	MTL	METAL	W/	WITH
DWLS	DOWELS	NIC	NOT IN CONTRACT	W/O	WITHOUT
EA	EACH	NOM	NOMINAL	WCG	WALL CORNER GUARD
EJ	EXPANSION JOINT	NTS	NOT TO SCALE	WD	WOOD
EL	ELEVATION	NO	NUMBER	WDW	WINDOW
ELEC	ELECTRIC/ELECTRICAL	OA	OVERALL OR OUTSIDE AIR	WT	WEIGHT
ELEC CONTR	ELECTRICAL CONTRACTOR	OC	ON CENTER	WP	WATER PROOF
ELEV	ELEVATOR OR ELEVATION	OD	OUTSIDE DIAMETER	WWF	WELDED WIRE FABRIC
EMBED	EMBEDMENT	OF	OUTSIDE FACE OR OPPOSITE FACE	WSB	WALL SERVICE BASIN
EMER	EMERGENCY	OPNG	OPENING		
EP	EPOXY	OPP	OPPOSITE OR OPPOSITE HAND		
EQ	EQUAL	PSF	POUNDS PER SQUARE FOOT		
EW	EACH WAY	PS	POUNDS PER SQUARE INCH		
EWC	ELECTRIC WATER COOLER	PT	PRESSURE TREATED OR PAINT		
EWH	ELECTRIC WATER HEATER	PTN	PARTITION		
		PVMT	PAVEMENT		

THE MATERIALS, ABBREVIATIONS, AND DRAFTING SYMBOLS LEGEND ARE EACH AN ALL INCLUSIVE MASTER LIST USED BY THIS FIRM. THE INCLUSION OF THESE LEGENDS INTO THESE DOCUMENTS DOES NOT IMPLY THAT ALL THE SYMBOLS OR MATERIALS INCLUDED IN THESE LEGENDS ARE INCORPORATED INTO THIS PROJECT. ABBREVIATIONS MAY APPEAR WITH PERIODS OR OTHER PUNCTUATION SEPARATING CHARACTERS ON THE DRAWINGS; THE MEANING REMAINS THE SAME.

DETAIL CALLOUT DETAIL NUMBER DRAWING NUMBER	
EXTERIOR ELEVATION ELEVATION NUMBER DRAWING NUMBER	
INTERIOR ELEVATION ELEVATION NUMBER DRAWING NUMBER	
SECTION REFERENCE SECTION NUMBER DRAWING NUMBER	
COLUMN NO.	26
REFERENCE LINE NO.	26
LOCATION ELEVATION	1ST FLR 100'-0"
ROOM NUMBER	204
DOOR NO. NEW	203.2
DOOR NO. EXISTING	203.1X
NOMINAL THICKNESS CONSTRUCTION TYPE SPECIAL CONDITION	
KEYNOTE IDENTIFICATION	7.531
WINDOW TYPE IDENTIFICATION	
TOILET ACCESSORY IDENTIFICATION	A
SPOT ELEVATION	1ST FLR 100'-0"
FIRE-RATING	
	1-HOUR
	2-HOUR
	CONCRETE
	BRICK MASONRY IN PLAN
	CONCRETE MASONRY IN PLAN (RUNNING BOND)
	CONCRETE MASONRY IN PLAN (STACK BOND)
	STONE MASONRY IN PLAN
	RAKED JOINT IN PLAN CTRL./EXP. JOINT IN PLAN
	BRICK MASONRY IN SECTION DETAIL
	CONCRETE MASONRY IN SECTION DETAIL
	STONE MASONRY IN SECTION DETAIL
	STEEL IN SECTION DETAIL
	DISCONTINUOUS ROUGH WOOD BLOCKING IN SECTION
	CONTINUOUS ROUGH WOOD FRAMING/BLOCKING IN SECTION
	FINISHED WOOD IN SECTION DETAIL
	RIGID BOARD INSULATION
	RIGID BOARD INSULATION (ROOFING)
	BATT INSULATION
	GYPSUM BOARD
	ACOUSTICAL CEILING PANEL
	BITUMINOUS CONCRETE (ASPHALT) PAVING IN SECTION
	AGGREGATE BALLAST, FILL OR BACKFILL IN SECTION
	UNDISTURBED EARTH
	EARTH BACKFILL

DRAFTING SYMBOLS AND MATERIALS LEGEND



PROJECT

VILLAGE OF OAK PARK - PUBLIC WORKS HVAC IMPROVEMENTS
201 S. BLVD.
OAK PARK, IL 60302

OWNER

VILLAGE OF OAK PARK
201 S. BLVD.
OAK PARK, IL 60302

ARCHITECT/ ENGINEER

KLUBER ARCHITECTS + ENGINEERS
41 W BENTON STREET
AURORA, ILLINOIS 60506
TEL (630) 406-1213
FAX (630) 406-9472
www.kluberinc.com

REQUIRED CODE COMPLIANCE INFORMATION

REQUIRED PLAN COVER SHEET INFORMATION FOR REVIEW UNDER 2021 INTERNATIONAL CODES, STATE OF ILLINOIS ACCESSIBILITY CODE, AND THE STATE OF ILLINOIS PLUMBING CODE CODE REVIEW DATA

APPLICABLE CODES

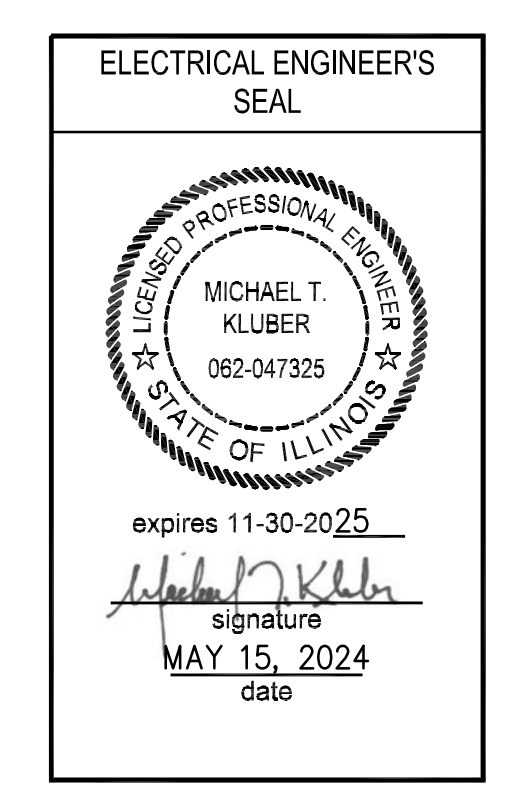
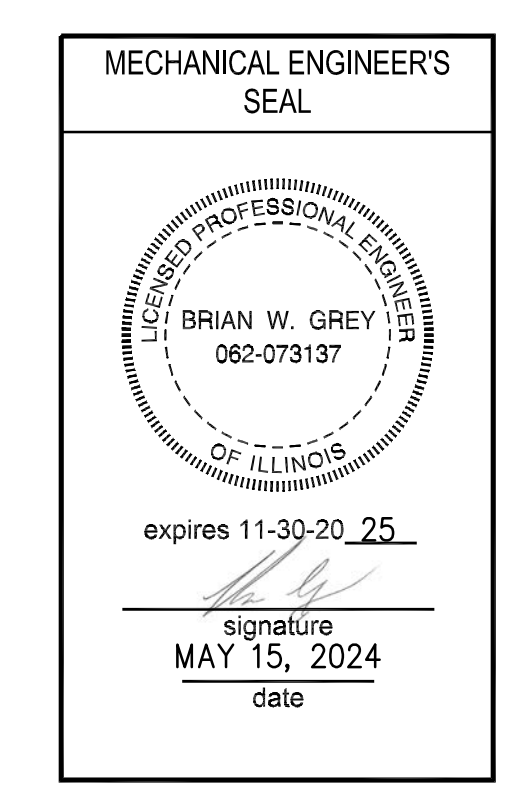
2021 INTERNATIONAL BUILDING CODE
2021 INTERNATIONAL MECHANICAL CODE
2021 INTERNATIONAL FUEL GAS CODE
2018 INTERNATIONAL EXISTING BUILDING CODE
2021 INTERNATIONAL FIRE CODE
2021 NATIONAL ELECTRICAL CODE
LOCAL AMENDMENTS TO THE ABOVE CODES
2021 INTERNATIONAL ENERGY CONSERVATION CODE W/STATE AMENDMENTS
2018 ILLINOIS ACCESSIBILITY CODE

GENERAL STATEMENT OF OVERALL PROJECT SCOPE AND INTENT:
PROJECT CONSISTS OF INTERIOR HVAC IMPROVEMENTS CONSISTING OF UNIT HEATER REPLACEMENT, FIRE DAMPER REPLACEMENT AND DAMAGED DUCT WORK REPLACEMENT TO AN EXISTING MULTI-STORY PUBLIC WORKS BUILDING. BUILDING COMPONENTS AND SYSTEMS MODIFIED OR REPLACED AS PART OF THE WORK OF THIS PROJECT HAVE BEEN BROUGHT UP TO MEET THE REQUIREMENTS OF THE APPLICABLE CURRENT CODES.

- A. USE AND OCCUPANCY GROUP(S) CLASSIFICATION: B, S-1, S-2.
- B. TYPE OF CONSTRUCTION: IIB
- C. SQUARE FOOTAGE OF BUILDING: SQUARE FOOTAGE IS APPROXIMATELY 72,338.
ALLOWABLE SQUARE FOOTAGE: NOT APPLICABLE; NO CHANGE OF USE.
FULLY SPRINKLERED; ALARMED
- D. OCCUPANT LOAD BASED ON INTERNATIONAL BUILDING CODE: NOT APPLICABLE, NO CHANGE.
- E. OCCUPANT LOAD BASED ON ILLINOIS PLUMBING CODE: NOT APPLICABLE, NO CHANGE.
- F. DESIGNED LIVE LOADS: NOT APPLICABLE; THIS IS AN EXISTING BUILDING, TO WHICH NO MODIFICATIONS ARE BEING MADE TO STRUCTURAL COMPONENTS.
- G. THE DESIGN PROFESSIONALS IN RESPONSIBLE CHARGE ARE IDENTIFIED IN THE SEALS AND CERTIFICATES AREA, BELOW.

SEALS & CERTIFICATIONS

I HAVE PREPARED, OR CAUSED TO BE PREPARED UNDER MY DIRECT SUPERVISION, THE ATTACHED PLANS AND SPECIFICATIONS AND STATE THAT TO THE BEST OF MY KNOWLEDGE AND BELIEF, AND TO THE EXTENT OF MY CONTRACTUAL OBLIGATION, THEY ARE IN COMPLIANCE WITH IBC 2021 EDITION, THE ENVIRONMENTAL BARRIERS ACT AND THE ILLINOIS ACCESSIBILITY CODE.



KLUBER, INC. ILLINOIS PROFESSIONAL DESIGN FIRM LICENSE #184-001284

KLUBER Architects + Engineers

Kluber, Inc.
Aurora, Illinois 60506
Tel: (630) 406-1213
Chicago, Illinois 60606
Tel: (773) 607-2670
www.kluberinc.com

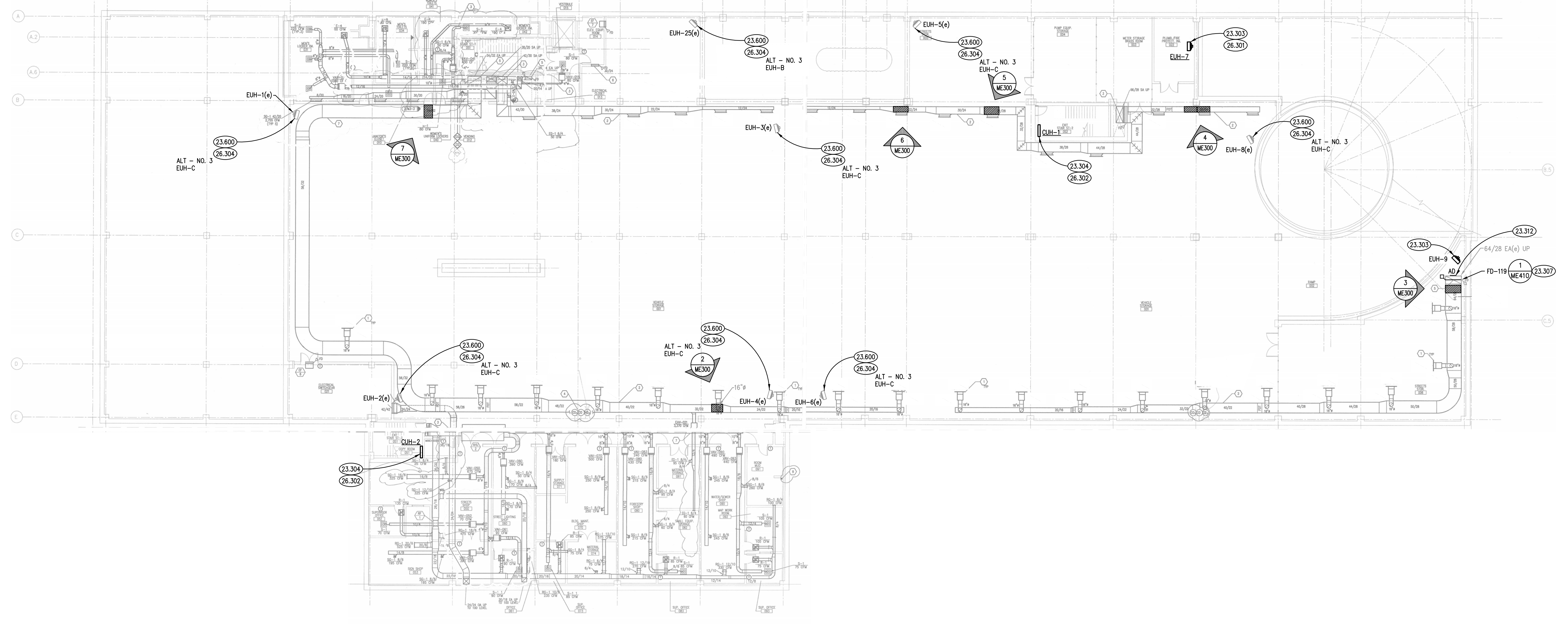
VILLAGE OF OAK PARK - PUBLIC WORKS HVAC RESTORATION
VILLAGE OF OAK PARK
201 S. BOULEVARD
OAK PARK, IL 60302

ISSUED
05/15/24 B.W. & P.M.

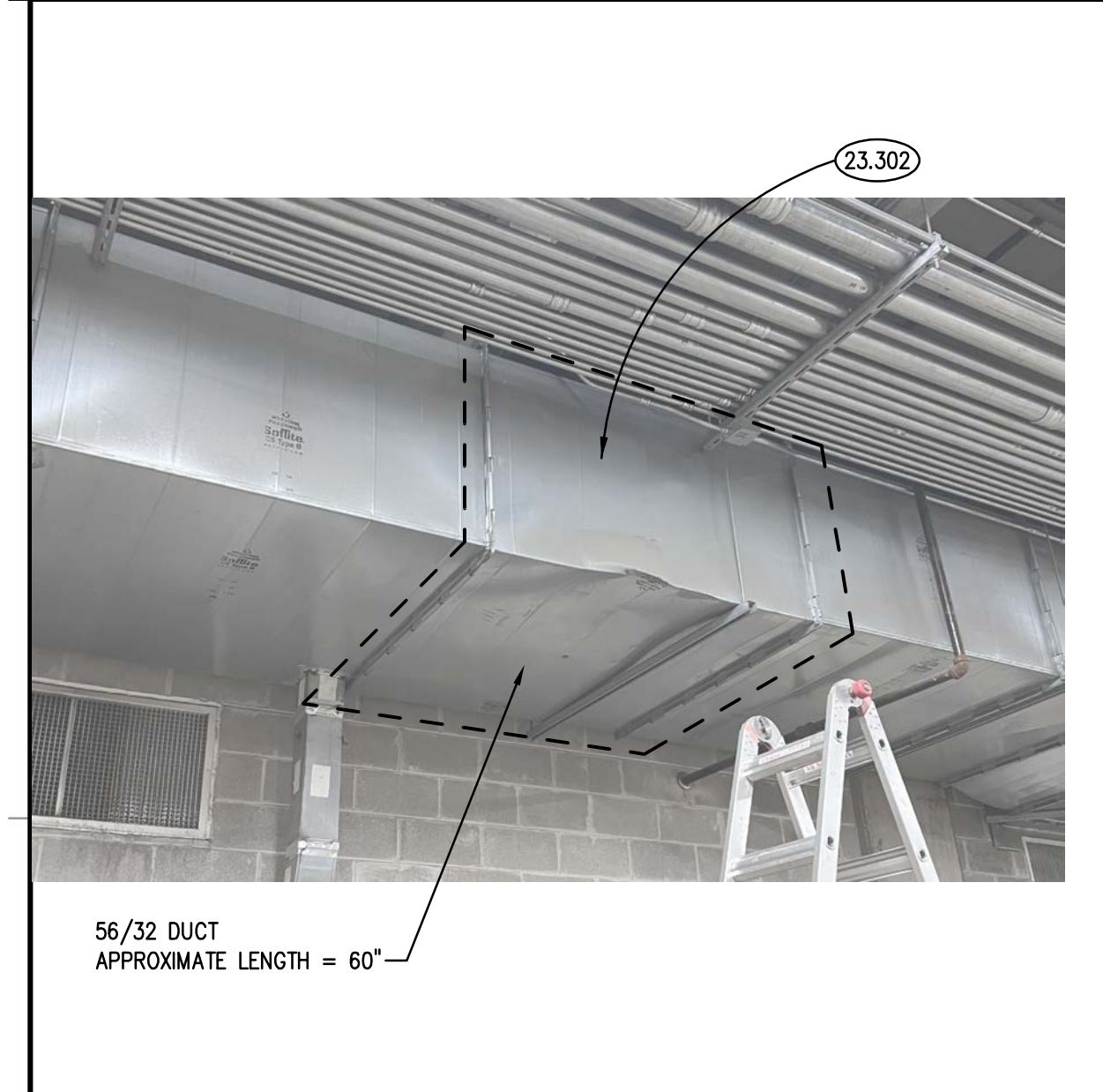
JOB NO. 24-475-1536
DRAWN KJD
CHECKED JMB
APPROVED BWG

SHEET TITLE
COVER SHEET, GENERAL NOTES, SYMBOLS AND DRAWING INDEX

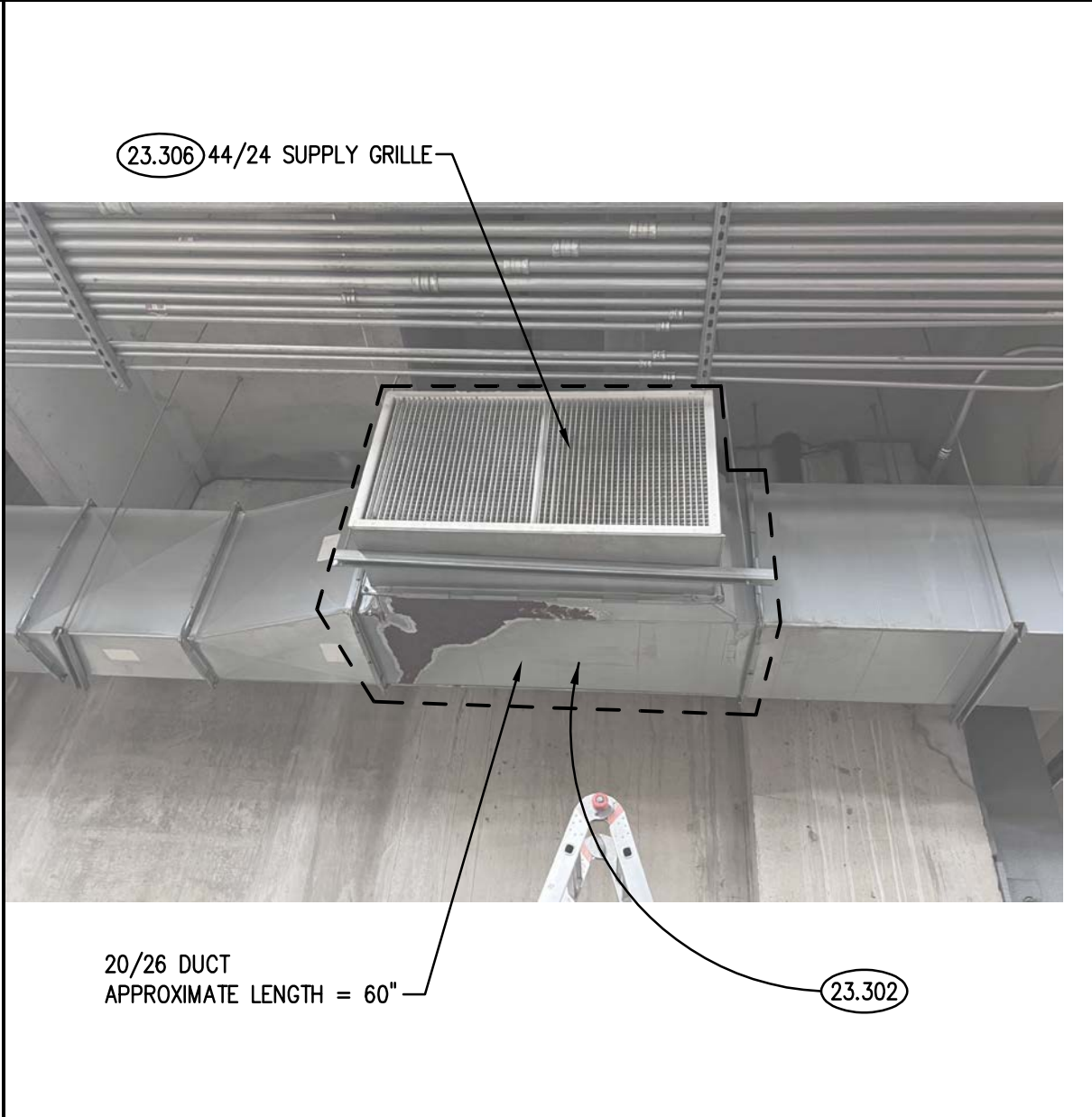
SHEET NUMBER
G100



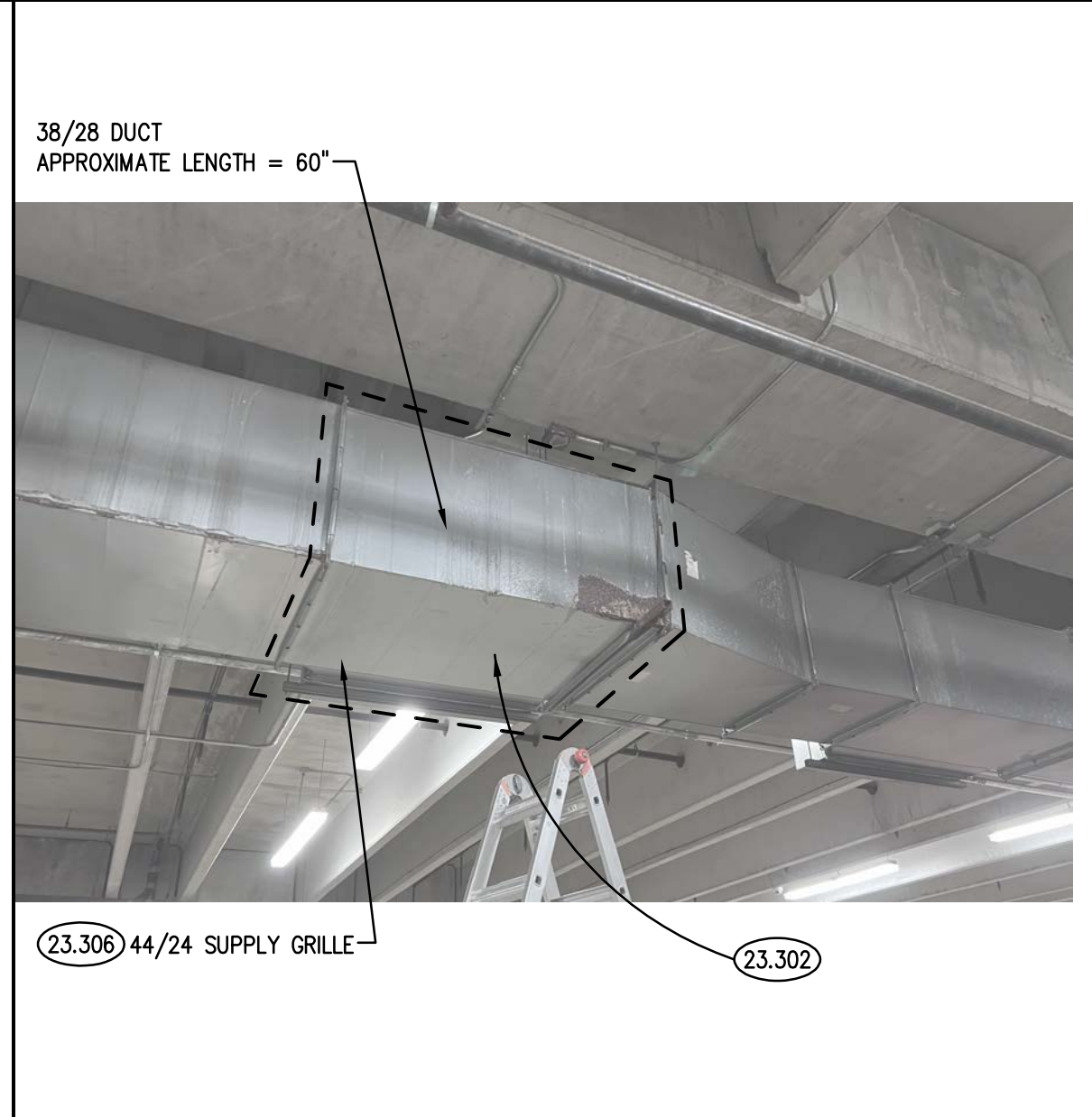
BASEMENT MECHANICAL PLAN ①
SCALE: 1/16" = 1'-0"



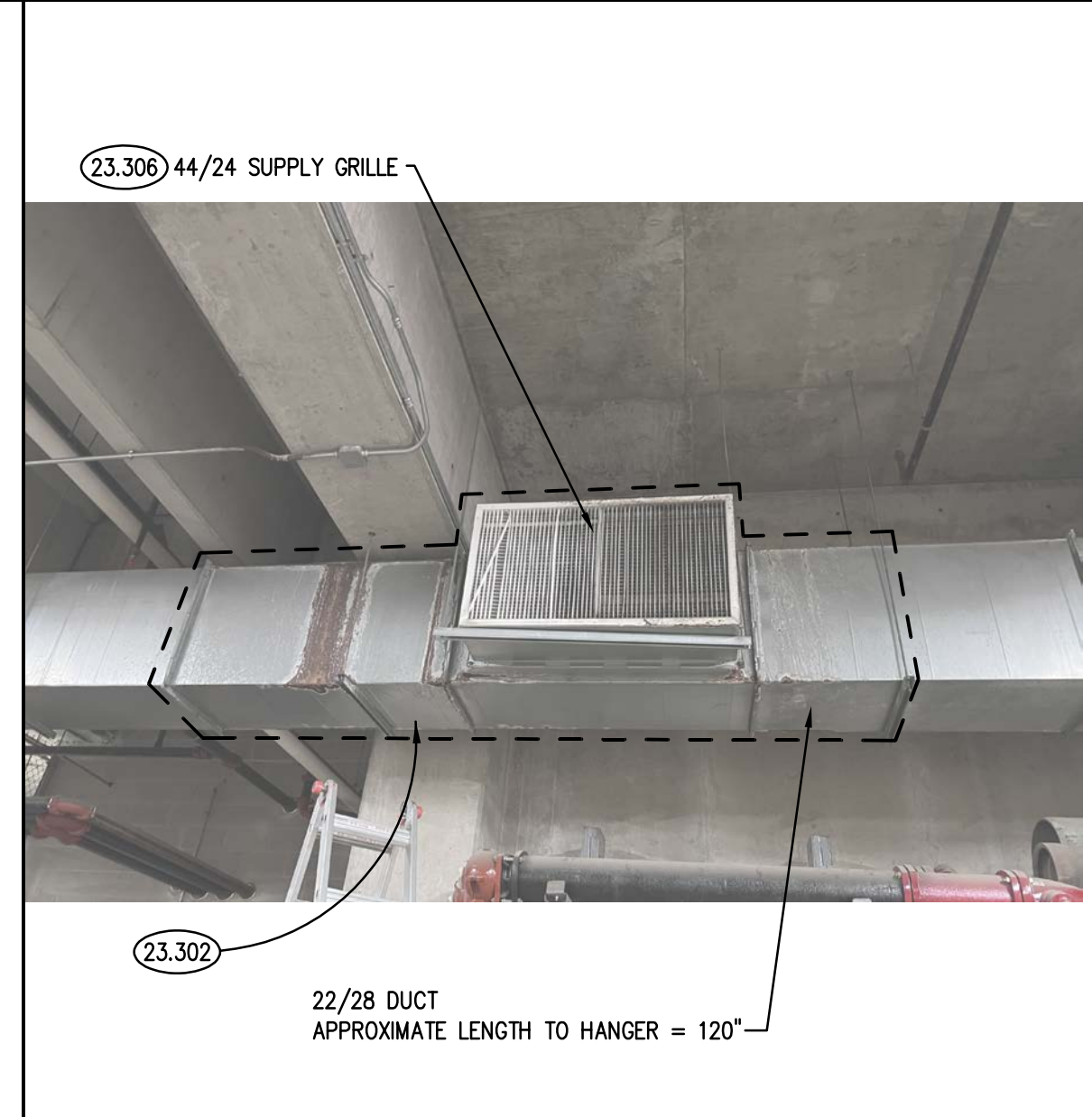
DETAIL ⑦
SCALE: N.T.S.



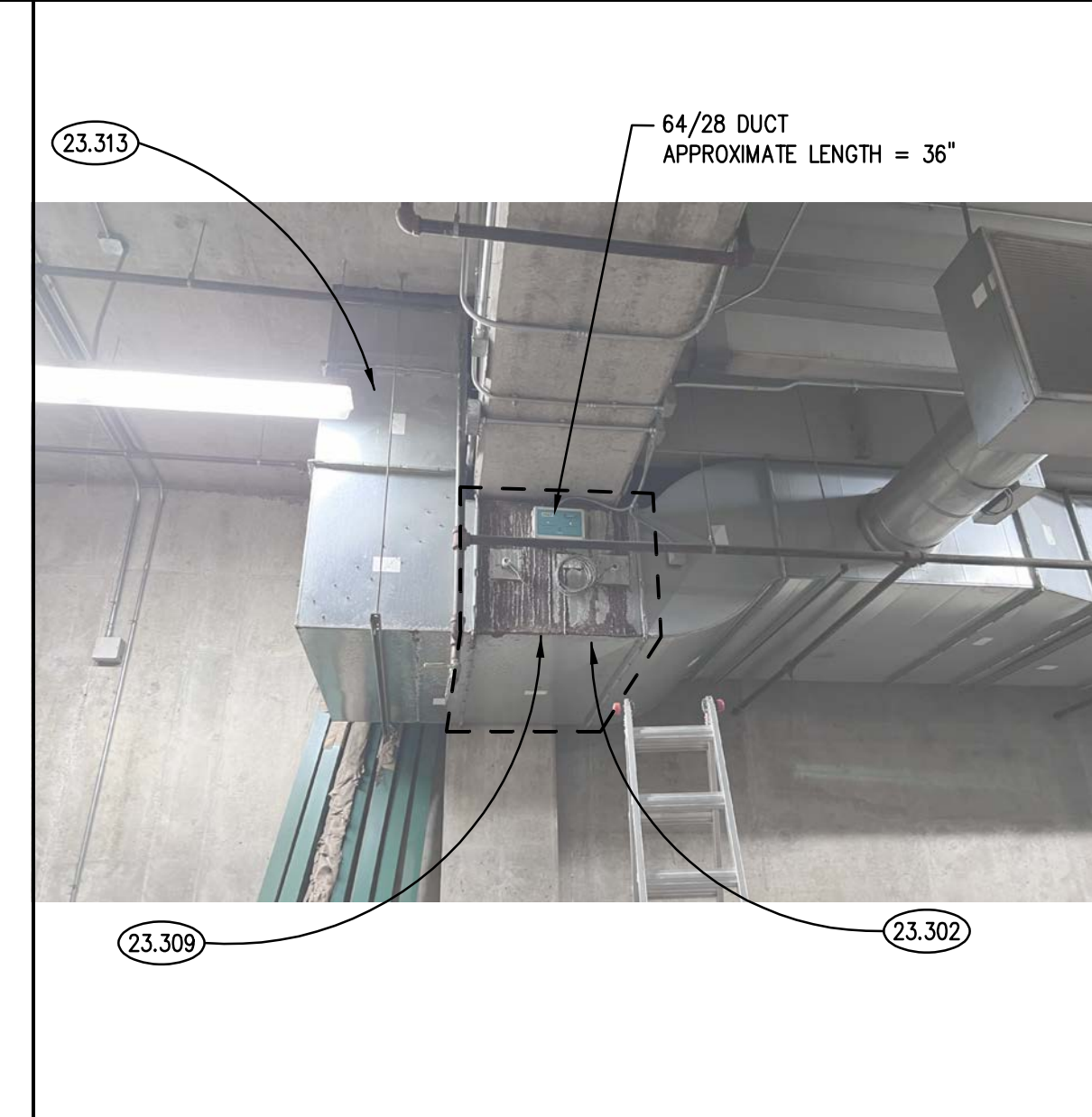
DETAIL ⑥
SCALE: N.T.S.



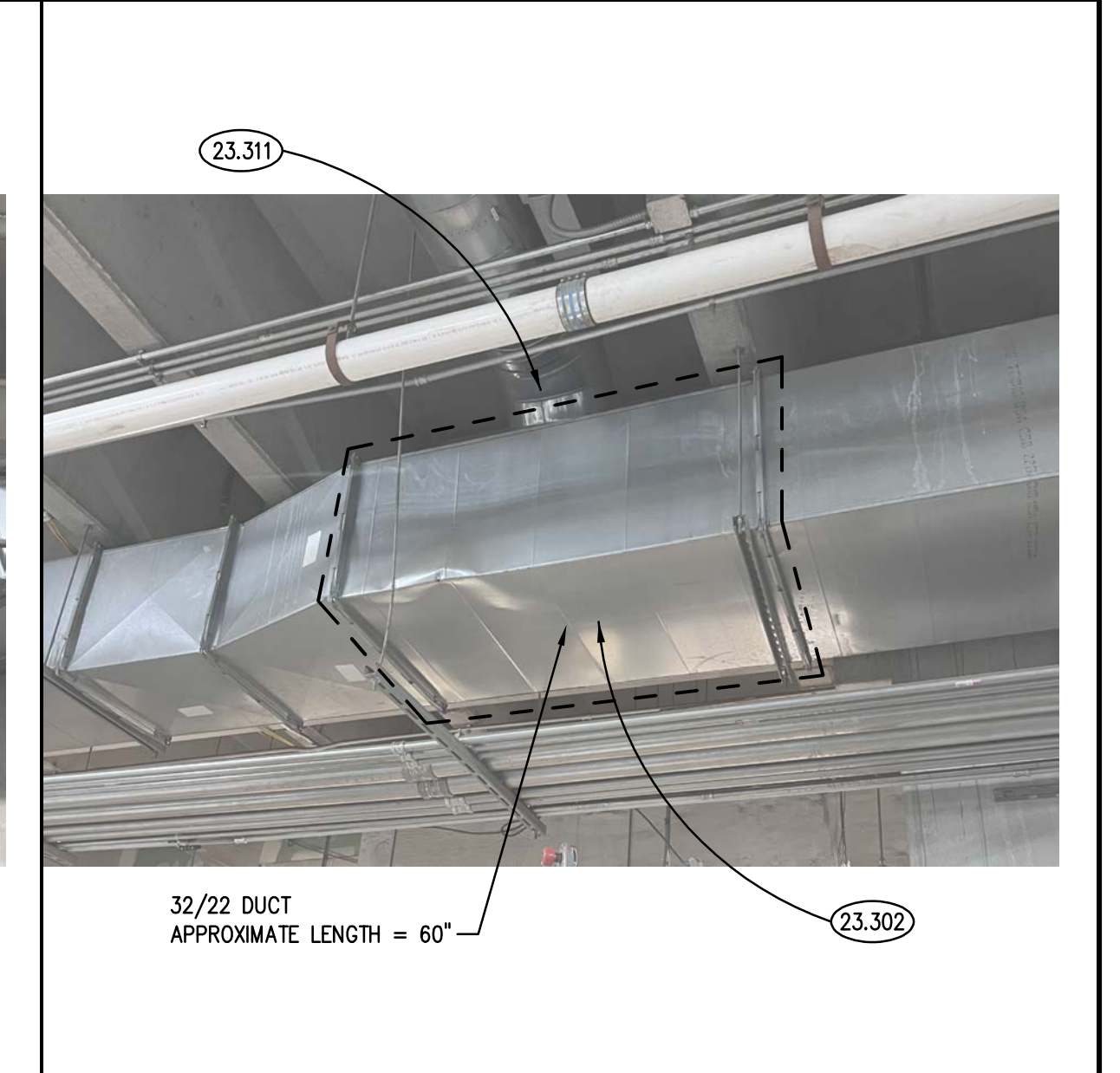
DETAIL ⑤
SCALE: N.T.S.



DETAIL ④
SCALE: N.T.S.



DETAIL ③
SCALE: N.T.S.



DETAIL ②
SCALE: N.T.S.

MECHANICAL GENERAL NOTES

- REFER TO DRAWING G100 FOR PROJECT GENERAL NOTES.
- ALL DUCTWORK ARE SHOWN DIAGMATICALLY AND DO NOT SHOW ALL REQUIRED FITTINGS, OFFSETS, DROPS AND RISES. THE CONTRACTOR IS RESPONSIBLE TO PROVIDE ALL MATERIAL AND LABOR FOR A COMPLETE AND WORKING SYSTEM. COORDINATE WITH OTHER TRADES FOR SPACE AVAILABLE AND RELATIVE LOCATIONS OF EQUIPMENT, PIPING, DUCTWORK, ETC.
- EXISTING DUCTWORK INDICATED ON THESE PLANS SHALL BE FIELD VERIFIED FOR EXACT LOCATIONS, QUANTITY AND SIZES.
- ALL TAPES AND MASTICS USED TO SEAL DUCTWORK LISTED AND LABELED IN ACCORDANCE WITH UL 181A SHALL BE MARKED ACCORDINGLY. ALL TAPES AND MASTICS USED TO SEAL FLEXIBLE DUCTS AND AIR CONNECTORS SHALL COMPLY WITH UL 181B AND MARKED ACCORDINGLY.
- SPACE ALLOCATION, COORDINATION WITH ELECTRICAL, ARCHITECTURAL & OTHER MECHANICAL COMPONENTS HAVE BEEN MADE WITH RESPECT TO ALL EQUIPMENT SCHEDULED ON THESE DRAWINGS AND IN THE SPECIFICATIONS OF THE FIRST NAMED MANUFACTURER ONLY. OTHER MANUFACTURERS ARE ACCEPTABLE PROVIDED THEY MEET PERFORMANCE REQUIREMENTS AND AFOREMENTIONED COORDINATION.
- OBTAIN AND PAY ALL COSTS FOR PERMITS, LICENSES, CERTIFICATE FILING AND ALL INSPECTIONS BY AUTHORITIES HAVING JURISDICTION.

KEYNOTES

- 23.302 REMOVE DAMAGED DUCTWORK TO BE REPLACED AND PROVIDE NEW GALVANIZED STEEL DUCTWORK MATCHING EXISTING THICKNESS. FIELD VERIFY DUCT DIMENSIONS PRIOR TO ORDERING.
- 23.303 REMOVE UNIT HEATER AND PROVIDE NEW UNIT HEATER. MAINTAIN ALL CLEARANCES AROUND UNIT HEATER FOR SERVICING. PROVIDE NEW MOUNTING EQUIPMENT AS REQUIRED. INSTALL IN ACCORDANCE WITH MANUFACTURER'S REQUIREMENT.
- 23.304 REMOVE CABINET UNIT HEATER. PROVIDE NEW CABINET UNIT HEATER. MAINTAIN ALL CLEARANCES AROUND CABINET UNIT HEATER FOR SERVICING. INSTALL IN ACCORDANCE WITH MANUFACTURER'S REQUIREMENT.
- 23.306 REMOVE DUCT TAKE-OFF AND SUPPLY GRILLE. PROVIDE NEW DUCT TAKE-OFF WITH BALANCING DAMPER AND SUPPLY GRILLE TO MATCH EXISTING. NEW GRILLE SHALL BE STEEL WITH DOUBLE DEFLECTION DAMPER AND 301R-40 OR EQUAL. BALANCE TO 3.370 CFM.
- 23.307 REMOVE FIRE DAMPER AND PROVIDE NEW FIRE DAMPER. PROVIDE ALL MATERIALS AND LABOR TO INSTALL NEW FIRE DAMPER IN EXISTING DUCT. FIRE DAMPER MUST BE FABRICATED IN ACCORDANCE WITH NFPA 90A AND UL555. FIRE DAMPER SHALL BE GALVANIZED STEEL, 22-GAUGE, 0.0299-INCH FRAME, HORIZONTAL, CURTAIN STYLE WITH STAINLESS STEEL CLOSURE SPRING WITH FUSIBLE LINK. MINIMUM FIRE RATING OF 1-1/2 HOURS. GREENHECK OR APPROVED EQUAL.
- 23.309 TEMPORARILY DISCONNECT AND PROTECT CARBON DIOXIDE AND NITROGEN SENSORS. PROVIDE ALL MATERIALS AND LABOR TO REINSTALL EXISTING SENSORS INTO NEW DUCTWORK.
- 23.311 PROVIDE CONNECTION BETWEEN EXISTING DUCT TAKE-OFF AND REPLACED SECTION OF DUCT TO MAINTAIN EXISTING.
- 23.312 PROVIDE NEW 24/24 ACCESS DOOR FOR FIRE DAMPER. LOCATE ACCESS DOOR BELOW FLOOR LEVEL TO EASILY SERVICE FIRE DAMPER.
- 23.313 DISCONNECT AND PROTECT SECTIONS OF DUCT AS REQUIRED TO INSTALL NEW FIRE DAMPER AND ACCESS DOOR.
- 23.600 ALTERNATE NO. 3 - EXISTING UNIT HEATER. PROVIDE UNIT PRICING TO REPLACE UNIT HEATER IN KIND. REFER TO ALTERNATE NO. 3 - ELECTRIC UNIT HEATER SCHEDULE ON DRAWING ME410 FOR ADDITIONAL INFORMATION.
- 26.301 DISCONNECT AND PROTECT EXISTING BRANCH CIRCUITRY TO ELECTRIC UNIT HEATER TO BE REPLACED. EXTEND BRANCH CIRCUITRY AND PROVIDE NEW ELECTRICAL CONNECTION TO ELECTRIC UNIT HEATER. DISCONNECT PROVIDED WITH UNIT. MATCH EXISTING.
- 26.302 DISCONNECT AND PROTECT EXISTING BRANCH CIRCUITRY TO ELECTRIC CABINET UNIT HEATER TO BE REPLACED. EXTEND BRANCH CIRCUITRY AND PROVIDE NEW ELECTRICAL CONNECTION TO ELECTRIC CABINET UNIT HEATER. DISCONNECT PROVIDED WITH UNIT. MATCH EXISTING.

KEYNOTES

- 26.304 ALTERNATE NO. 3 - PROVIDE UNIT PRICING TO DISCONNECT AND PROTECT EXISTING BRANCH CIRCUITRY TO UNIT HEATER TO BE REPLACED. EXTEND BRANCH CIRCUITRY TO NEW ELECTRICAL UNIT HEATER TO ENSURE A COMPLETE AND OPERATIONAL SYSTEM.

KEYNOTES ARE TYPICALLY NOT DUPLICATED WITHIN A GIVEN DETAIL. AN UN-KEYNOTED ITEM IN A DETAIL IS THE SAME AS A KEYNOTED ITEM HAVING THE SAME APPEARANCE WITHIN THE SAME DETAIL.

ISSUED	
DATE	
BY	
FOR	
JOB NO.	24-475-1536
DRAWN	KJD/ATR
CHECKED	BWG/MTK
APPROVED	BWG/MTK
SHEET TITLE	BASEMENT MECHANICAL PLAN AND DETAILS
SHEET NUMBER	ME300

EXISTING - ELECTRIC UNIT HEATER SCHEDULE

MARK	AIR FLOW RATE (CFM)	MIN CAPACITY (KW)	AIR TEMP RISE (°F)	SUPPLY FAN (HP)	ELECTRICAL (V/PH/Hz)	FULL LOAD AMPS	MODEL	AREA SERVED	NOTES
EUH-1	2100 / 1800	25	38 / 44	1/4	480/3/60	30	HUHA2548	RM 001	1, 2
EUH-2	2100 / 1800	25	38 / 44	1/4	480/3/60	30	HUHA2548	RM 001	1, 2
EUH-3	2100 / 1800	25	38 / 44	1/4	480/3/60	30	HUHA2548	RM 001	1, 2
EUH-4	2100 / 1800	25	38 / 44	1/4	480/3/60	30	HUHA2548	RM 001	1, 2
EUH-5	2100 / 1800	25	38 / 44	1/4	480/3/60	30	HUHA2548	RM 005	1, 2
EUH-6	2100 / 1800	25	38 / 44	1/4	480/3/60	30	HUHA2548	RM 001	1, 2
EUH-7	350	5	45	1/100	277/1/60	18	HUHA527	RM 022	1, 2
EUH-8	2100 / 1800	25	38 / 44	1/4	480/3/60	30	HUHA2548	RM 004	1, 2
EUH-9	2100 / 1800	25	38 / 44	1/4	480/3/60	30	HUHA2548	RM 001	1, 2
EUH-10	350	5	45	1/100	277/1/60	18	HUHA527	RM 120	1, 2
EUH-11	350	5	45	1/100	277/1/60	18	HUHA527	RM 129	1, 2
EUH-12	350	5	45	1/100	277/1/60	18	HUHA527	RM 129	1, 2
EUH-13	2100 / 1800	25	38 / 44	1/4	480/3/60	30	HUHA2548	RM 103	1, 2
EUH-14	485	7.5	46	1/5	480/3/60	9	TUW7548TLS	RM 109	1, 2
EUH-15	2100 / 1800	25	38 / 44	1/4	480/3/60	30	HUHA2548	RM 103	1, 2
EUH-16	650	7.5	37	1/30	480/3/60	9	HUHA748	RAMP	1, 2
EUH-17	650	7.5	37	1/30	480/3/60	9	HUHA748	RAMP	1, 2
EUH-18	2100 / 1800	25	38 / 44	1/4	480/3/60	30	HUHA2548	RAMP	1, 2
EUH-19	2100 / 1800	25	38 / 44	1/4	480/3/60	30	HUHA2548	RM 103	1, 2
EUH-20	2100 / 1800	25	38 / 44	1/4	480/3/60	30	HUHA2548	RM 103	1, 2
EUH-21	2100 / 1800	25	38 / 44	1/4	480/3/60	30	HUHA2548	RM 106A	1, 2
EUH-22	650	7.5	37	1/30	480/3/60	9	HUHA748	RM 251	1, 2
EUH-23	350	5	45	1/100	480/3/60	6	HUHA548	RM 106	1, 2
EUH-24	2100 / 1800	25	38 / 44	1/4	480/3/60	30	HUHA2548	RM 106A	1, 2
EUH-25	650	7.5	37	1/30	480/3/60	9	HUHA748	RM 001	1, 2
EUH-26	485	7.5	46	1/5	480/3/60	9	TUW7548TLS	RM 109	1, 2
EUH-27	350	5	45	1/100	277/1/60	18	HUHA527	RM 120	1, 2
CUH-1	250	2	25	1/8	480/3/60	3	CUH935	RM 052	1, 2
CUH-2	250	2	25	1/8	480/3/60	3	CUH935	RM 051	1, 2
CUH-3	500	8	51	1/8	480/3/60	11	CUH945	RM 126	1, 2
CUH-4	500	10	63	1/8	480/3/60	13	CUH945	RM 101	1, 2
CUH-5	500	10	63	1/8	480/3/60	13	CUH945	RM 151	1, 2
CUH-6	250	2	25	1/8	480/3/60	3	CUH935	RM 152	1, 2
CUH-7	250	2	25	1/8	480/3/60	3	CUH935	RM 107	1, 2
CUH-8	250	4	51	1/8	480/3/60	6	CUH935	RM 153	1, 2

- NOTES
1. MODEL BASED ON BERKO.
2. FOR INFORMATION PURPOSES ONLY

BASE BID - ELECTRIC UNIT HEATER SCHEDULE

MARK	AIR FLOW RATE (CFM)	MIN CAPACITY (KW)	AIR TEMP RISE (°F)	SUPPLY FAN (HP)	ELECTRICAL (V/PH/Hz)	FULL LOAD AMPS	MODEL	AREA SERVED	NOTES
EUH-7	350	5	45	1/100	277/1/60	18	HUHA527	RM 022	1, 2, 3, 5
EUH-9	2100 / 1800	25	38 / 44	1/4	480/3/60	30	HUHA2548	RM 001	1, 2, 3, 5
EUH-13	2100 / 1800	25	38 / 44	1/4	480/3/60	30	HUHA2548	RM 103	1, 2, 3, 4
EUH-14	700	7.5	37	1/30	480/3/60	9	BW007432	RM 109	1, 2, 3, 5
EUH-22	650	7.5	37	1/30	480/3/60	9	HUHA748	RM 251	1, 2, 3, 4
EUH-23	350	5	45	1/100	480/3/60	6	HUHA548	RM 106	1, 2, 3, 5
CUH-1	250	2	25	1/8	480/3/60	3	CUH935	RM 052	1, 2, 3, 4, 6
CUH-2	250	2	25	1/8	480/3/60	3	CUH935	RM 051	1, 2, 3, 4, 6

- NOTES
1. MODEL BASED ON BERKO.
2. PROVIDE POWER DISCONNECT SWITCH.
3. PROVIDE INTERNAL THERMOSTAT.
4. PROVIDE CEILING MOUNTING BRACKETS.
5. PROVIDE WALL SWIVEL MOUNTING BRACKETS.
6. COLOR TO BE SELECTED BY THE ARCHITECT.

ALTERNATE NO. 3 - ELECTRIC UNIT HEATER SCHEDULE

MARK	AIR FLOW RATE (CFM)	MIN CAPACITY (KW)	AIR TEMP RISE (°F)	SUPPLY FAN (HP)	ELECTRICAL (V/PH/Hz)	FULL LOAD AMPS	MODEL	AREA SERVED	NOTES
EUH-A	350	5	45	1/100	277/1/60	18	HUHA527	VARIES	1, 2, 3, 4, 6
EUH-B	650	7.5	37	1/30	480/3/60	9	HUHA748	VARIES	1, 2, 3, 4, 6
EUH-C	2100 / 1800	25	38 / 44	1/4	480/3/60	30	HUHA2548	VARIES	1, 2, 3, 4, 6
EUH-D	700	7.5	34	1/4	480/3/60	9	BW007432	VARIES	1, 2, 3, 4, 6
CUH-A	250	2	25	1/8	480/3/60	3	CUH935	VARIES	1, 2, 3, 5, 6
CUH-B	250	4	51	1/8	480/3/60	6	CUH935	VARIES	1, 2, 3, 5, 6
CUH-C	500	8	51	1/8	480/3/60	11	CUH945	VARIES	1, 2, 3, 5, 6
CUH-D	500	10	63	1/8	480/3/60	13	CUH945	VARIES	1, 2, 3, 5, 6

- NOTES
1. MODEL BASED ON BERKO.
2. PROVIDE POWER DISCONNECT SWITCH.
3. PROVIDE INTERNAL THERMOSTAT.
4. PROVIDE REQUIRED MOUNTING BRACKETS.
5. COLOR TO BE SELECTED BY THE ARCHITECT.
6. PROVIDE UNIT PRICING FOR REPLACEMENT OF EACH TYPE OF HEATER SCHEDULED ABOVE. PRICING SHALL INCLUDE ALL MATERIALS AND LABOR TO REMOVE EXISTING UNIT HEATER AND INSTALL NEW UNIT HEATER.

ALTERNATE NO. 5 - FAN SCHEDULE

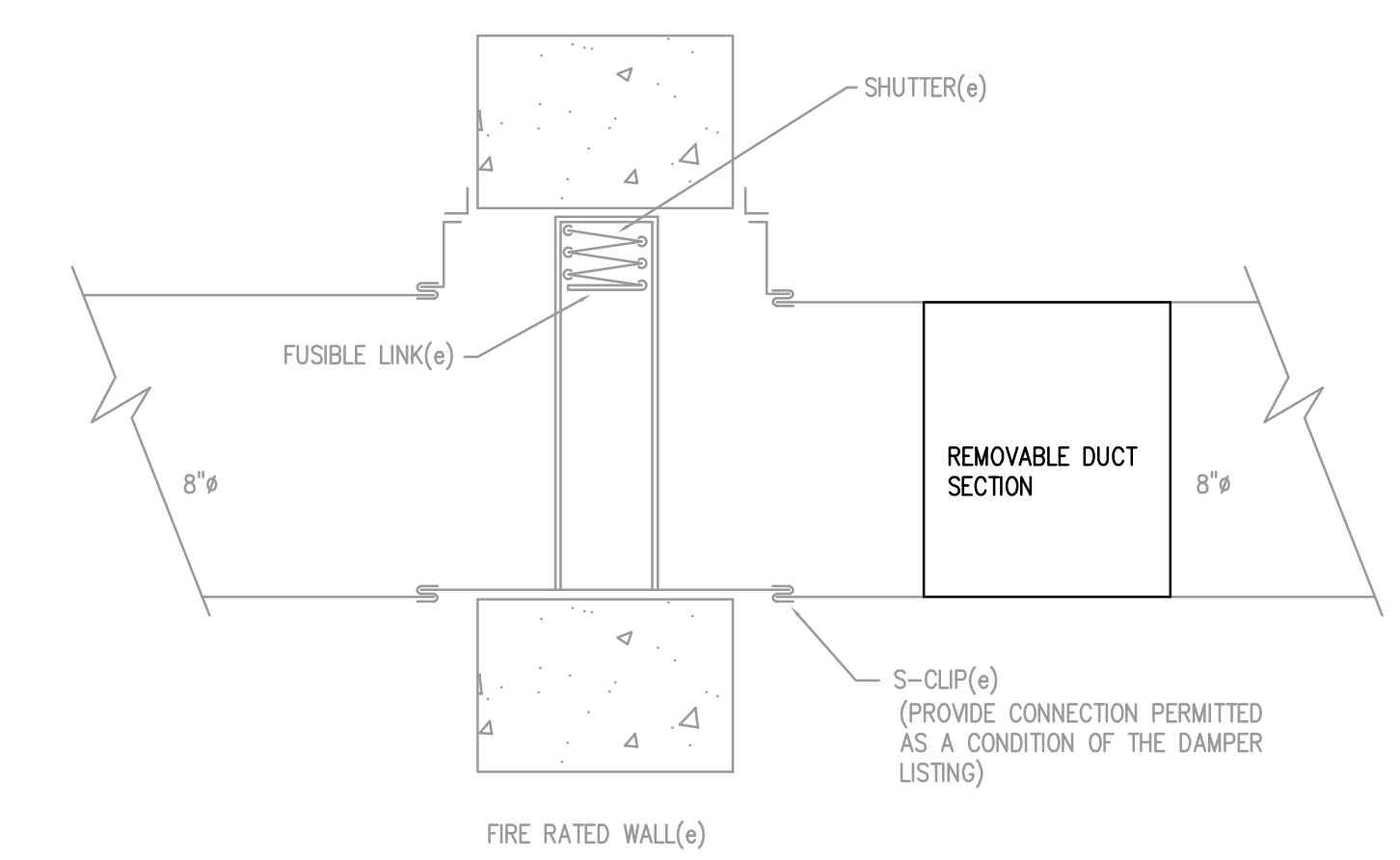
MARK	AIR FLOW RATE (CFM)	EXTERNAL S.P. (IN WG)	DRIVE TYPE	MOTOR (HP)	ELECTRICAL (V/PH/Hz)	FAN ENERGY INDEX (FEI)	AREA SERVED	LOCATION	MODEL	NOTES
EF-1	2215	1.25	BELT	3/4	460/3/60	N/A	-	ROOF	ACE-B	1, 2, 3, 4

- NOTES
1. MODEL BASED ON LOREN COOK.
2. SERVES LOWER LEVEL LOCKER ROOMS, RESTROOMS, AND FIRST LEVEL RESTROOMS.
3. PROVIDE POWER DISCONNECT SWITCH.
4. PROVIDE NEW MOTORIZED BACKDRAFT DAMPER.

ALTERNATE NO. 1 ELECTRIC DUCT HEATER SCHEDULE

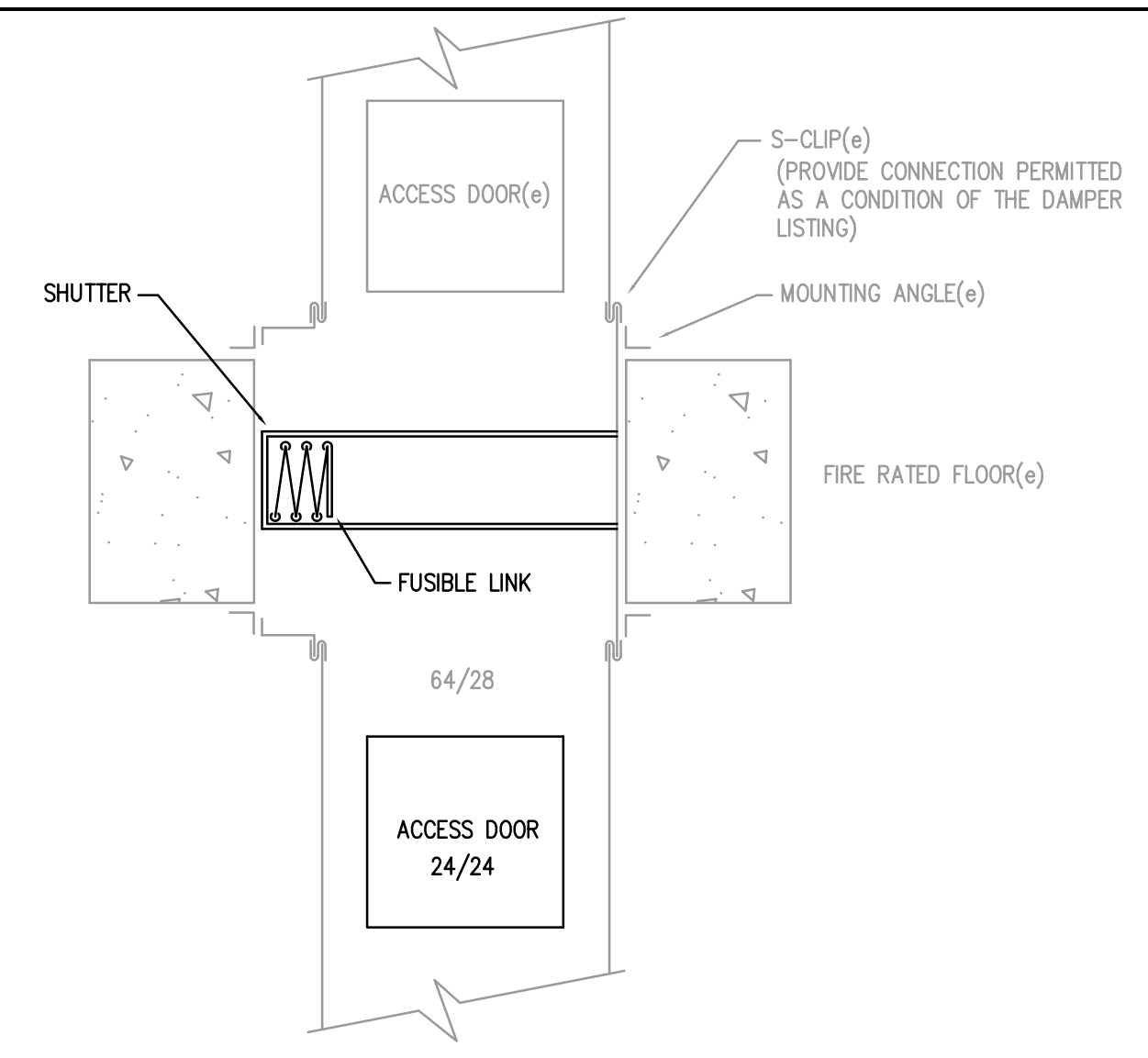
MARK	AIR FLOW RATE (CFM)	MIN CAPACITY (KW)	STAGES	EAT / LAT (°F / °F)	AIR TEMP RISE (°F)	DUCT SIZE (W X H)	ELECTRICAL (V/PH/Hz)	FULL LOAD AMPS	MODEL	AREA SERVED	LOCATION	NOTES
EDH-1	3,200	21	SCR	55 / 75	20	48 X 24	480/3/60	25.2	MSC	ERU-1	FLEET GARAGE	1, 2, 3, 4

- NOTES
1. MODEL BASED ON THERMOLEC.
2. PROVIDE WITH DOOR INTERLOCKING DISCONNECT SWITCH AND BUILT-IN AIRFLOW SENSOR.
3. WALL MOUNTED THERMOSTAT.
4. GASKETED CONTROL BOX.



- NOTE:
1. PROVIDE ACCESS PANELS FOR INSPECTION AND MAINTENANCE OF DAMPER. PROVIDE NAMEPLATE WITH MINIMUM 1/2" TALL LETTERING IDENTIFYING "FIRE DAMPER".

WALL FIRE DAMPER DETAIL
SCALE: NTS 2



- NOTE:
1. PROVIDE ACCESS PANELS FOR INSPECTION AND MAINTENANCE OF DAMPER. PROVIDE NAMEPLATE WITH MINIMUM 1/2" TALL LETTERING IDENTIFYING "FIRE DAMPER".

FLOOR FIRE DAMPER DETAIL
SCALE: NTS 1