

**VILLAGE OF OAK PARK
TRANSPORTATION COMMISSION MEETING
MONDAY MARCH 20, 2017 - 7:00 PM
PUBLIC WORKS CENTER CONFERENCE ROOM
2ND FLOOR AT 201 SOUTH BOULEVARD**

AGENDA

1. Call to Order
2. Non-agenda Public Comment - up to 15 minutes
3. Agenda Approval
4. Approval of Draft Transportation Commission Meeting Minutes
 - 4.1 Draft February 27, 2017 Transportation Commission meeting minutes
5. UPDATE ON THE VILLAGE WIDE PARKING STUDY
 - 5.1 Staff Agenda Item Commentary for On-Street Austin and Harlem
 - 5.2 Parking Permit Map
 - 5.3 Daytime Restrictions Parking Map
6. CONTINUED DEVELOPMENT OF THE TRAFFIC CALMING TOOLBOX
 - 6.1 Staff Agenda Item Commentary
 - 6.2 Background Information
 - 6.3 Pre-Final Traffic Calming Toolbox Scoring Table
 - 6.4 Eligibility/Prioritization Example from City of Centennial, Colorado NTMPs
 - 6.5 Table Listing Types of Traffic Calming Measures
 - 6.6 Examples of Traffic Calming Devices from Other Municipalities
7. OTHER ENCLOSURES
 - OE1 12 Months of P&T Traffic Action Item Activity Summary March 2016 – February 2017
8. Adjourn

Please call (708) 358-5724 if you are unable to attend

Get the latest Village news via e-mail. Just go to www.oak-park.us and click on the e-news icon to sign up. Also, follow us on *facebook*, *twitter* and *YouTube*.

If you require assistance to participate in any Village program or activity, contact the ADA Coordinator at (708) 358-5430 or e-mail building@oak-park.us at least 48 hours before the scheduled activity.

DRAFT Meeting Minutes
Transportation Commission
Monday, February 27, 2017
Council Chambers – Village Hall

Call to Order and Roll Call

Chair Chalabian called the meeting to order at 7:00 PM.

Present: Jack Chalabian, Kyle Eichenberger, Michael Stewart, James Thompson, Joel Schoenmeyer, Craig Chesney

Excused: None

Staff: Mike Koperniak, Jill Juliano, John Youkhana, Mary Avinger

There was no non-agenda public testimony.

Approval of Tonight's Meeting Agenda

Commissioner Chesney motioned to approve the agenda as presented and was seconded by Commissioner Eichenberger. The motion was approved by a unanimous voice vote.

Approval of the Draft December 12, 2016 Meeting Minutes

Commissioner Thompson motioned to approve the draft December 12, 2016, Transportation Commission meeting minutes and was seconded by Commissioner Schoenmeyer. The motion was approved by a unanimous voice vote.

UPDATE ON THE PARKING STUDY

John Youkhana, the Assistant Parking Director, gave a presentation that included two videos showing proposed simplified parking signs and spoke about doing a pilot program in the Village.

Commissioners Thompson, Eichenberger, Stewart, and Chesney all like the design, it works well, and is straightforward.

Commissioner Schoenmeyer asked when rolling out the pilot program, how many signs would be printed? John Youkhana responded that there would be 10 study areas with signs on different sides of the street. The goal is to clean up parking rules and use fewer signs.

On page 5.3 – 4/5, Commissioner Stewart questioned the direction of arrows on the sign. John Youkhana explained how the signs would be posted for arrow direction to explain restrictions.

Commissioner Eichenberger asked about the location signs on a block and said they should be simplified and properly oriented for optimal viewing.

Chair Chalabian how do the signs conform to MUTCD and Mike Koperniak responded signs can be made to conform. Chair Chalabian pointed out that the simplified design is being done in large cities and asked if similar sized cities are using these signs and John Youkhana responded that as of now he couldn't find any similar sized cities. Chair Chalabian asked where staff will focus the study and John Youkhana responded they haven't finalized the list but is open to suggestions from the Commission. Chair Chalabian thinks the study should be done along South Blvd, and in the Y2, Y3, and Y4 zones and added in many respects these signs are easy to read. Chair Chalabian also recommended staff looks for locations of highest parking tickets and test at those locations.

Commissioner Eichenberger thinks the study should include a mix of uses including high traffic locations.

CONTINUED DEVELOPMENT OF THE TRAFFIC CALMING TOOLBOX

Jill Juliano gave a presentation on the continued development of the traffic calming toolbox. She stated the Commission will start to work on developing the list of traffic calming measures the Village can use to address issues for submitted petitions and develop objective criteria for use in evaluating the validity and severity of petitions that are brought before the Commission for review. The Commission also needs to review and discuss finalizing scoring.

Chair Chalabian stated he would like a resolution within 90 days to get closure and so the Commission can use it.

Jill Juliano stated the two examples she used are from Placer County and Albuquerque and asked which format the Commission liked better.

Unanimously, the Commission all liked the Placer County format.

Commissioner Thompson asked for more information on the tool box and Jill Juliano explained why staff and the Commission are developing the traffic calming toolbox.

Commissioner Stewart stated if the Commission was to use the hybrid on page 37 that they should include bike friendliness.

A discussion took place about criteria and minimum effective scoring. It was decided that 25 points is the minimum score to bring a petition before the Transportation Commission and less than 25 points will only be on other enclosure.

A discussion took place among the Commissioners about the effects of a "high" score. The discussion also included questions from Commissioner Thompson about the environmental impact and if traffic control devices ever get removed.

Chair Chalabian asked how close they were to the development and said at the next meeting they need to discuss criteria and how to apply them. Commissioner Stewart agreed next meeting they will discuss criteria.

Commissioner Schoenmeyer motioned to adjourn the meeting and the motion was seconded by Commissioner Eichenberger.

The voice vote was unanimous to adjourn the meeting.

The meeting was adjourned at 8:20 PM.

Respectively submitted

Mary Avinger

Mary Avinger,
Administrative Secretary

Village Of Oak Park Transportation Commission Agenda Item

Item Title: On-Street Parking Austin Blvd. and Harlem Ave., including adjacent areas

Review Date: March 20th, 2017

Prepared By: Parking and Mobility Services

Abstract (briefly describe the item being reviewed):

The following items are under review to be presented at the next parking study session with the village board. Staff is bringing them forth to the transportation commission for comments. In addition, staff requests commissioner feedback related to the Village wide overnight parking ban and the concept of alternate side parking. As we move through the parking study topic areas these types of regulations will need to be considered.

Topics for discussion are as follows:

Day Time Parking Hourly Restrictions

As part of an effort to consolidate signage and improve understanding of parking restrictions Staff has been researching the existing posted signs and regulations.

For example, currently Austin has many restrictions, which maybe excessive and make parking for residents and customers difficult.:

1. No Parking 7am-9am
2. No Parking 4pm-6pm
3. 2 Hour Parking during the daytime

Resident Daytime Permit Parking

Resident day time permit parking exists but has not been utilized. Any parking zones which have not sold permits should be considered for removal.

Overnight On-Street Permit Parking

As part of an effort to standardize the overnight parking zone hours, staff has researched the existing posted hours as well as potential implementation of standardized hours similar to those recently agreed upon in the Y2, Y3, Y4 zones and previously in the Y1, Y9 and Z9.

Staff has located an estimated 20 spaces in the subject area which can be added to only high use zone in the Z3 area, which is a high demand area.

Off-Street Parking

While the area does not currently have any off street vacancies, there are some potential for adding more spaces. Village staff looked at expanding parking lots to include more spaces, however. this does not seem possible at the present time. There is an option to add off-street 24 hour parking on Ontario just off of Austin.

Currently, a church and hospital in the area have parking options in the form of a parking lot and garage, however, in the past there has been little interest in utilizing those spaces for resident permit parking. Additionally, a number of homes and multi-family properties with potential extra parking maybe an option for residences in need of parking. The Village does currently have a private spaces list, however, there is no other platform or education available to landlords with spaces to rent these spaces. Historically, larger lot parcels would be considered for entering into a lease with the village, to offer overnight parking for residents. Many times these agreements have become challenging due to changing needs of the landlords/businesses, as well as village costs associated to managing the parking. Technology today allows for such parking spaces to be listed online and in real-time, these platforms assist the landowner with enforcement as well as lists of vendors for signage, maintenance, and other parking related matters. These technology platforms also allow the landowner rent spaces based on current availability, increasing and decreasing spaces within the click of an app.

Through educational seminars and meet and greets for residents, landlords, and businesses with vendors, technology platforms may make it easy for these private spaces to become available to residents in need of parking. Additionally, this would be an opportunity to discuss best practices and long-term needs/solutions.

Harlem

Currently Harlem Ave. does not have any parking restrictions and staff does not recommend adding any on Harlem. There is no Overnight Parking and it would be virtually impossible to add. Recently staff has begun receiving calls from residents of multi-family dwellings and condo owners looking for additional space. The parking study work group did notice a number of parking lots currently utilized by gas stations, medical buildings, and office space that would be able to utilize technology for renting extra spaces to the general public. Staff will also review a parking area currently located on North Ave. as part of the next discussion (North Ave. and Roosevelt and adjacent areas).

Business Districts

Business districts will be addressed in later meetings that associate the business demand with street parking. For example Lake/Austin, Chicago/Austin, and Harrison/Austin.

Staff Recommendation(s):

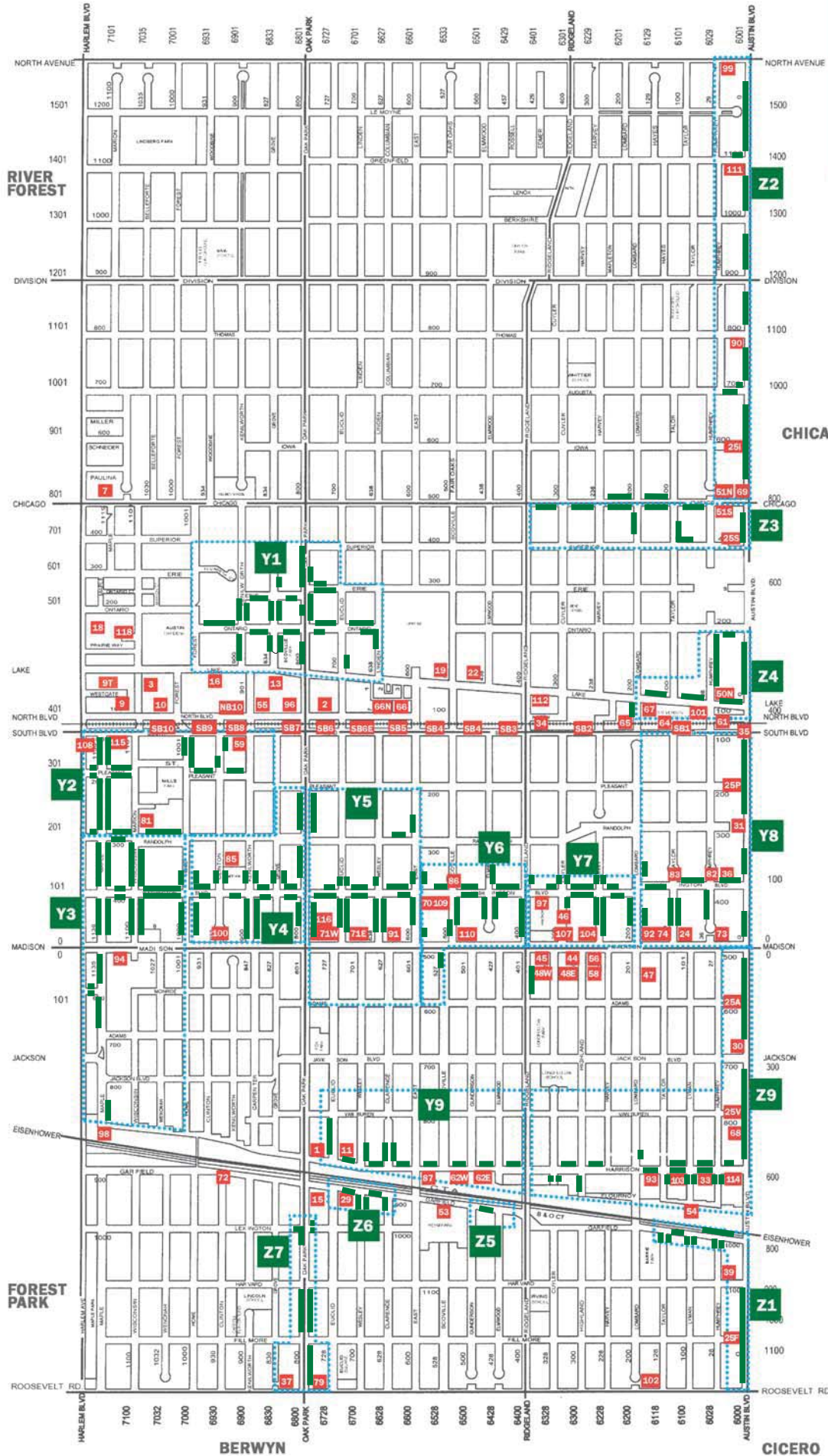
Based on comments received from Oak Park residents and businesses that current restriction are extreme, staff will be recommending to The Village Board remove the 2 hour parking limits on Austin Blvd. However, staff will recommend that we keep the No Parking 7am-9am and No Parking 4am-6pm restrictions in place due to rush hour safety concerns.

Staff recommends to remove daytime permit zone A8.

Based on previous comments from the transportation commission on standardizing overnight permit zone hours, staff will be recommending to the Village Board that the zones Z2, Z3, Y8, and Z1 be standardized to 11pm-6am overnight parking hours.

Based on comments received from the members of the parking study working group which comprised of fire department, police department, parking and mobility services, public works, village residents, landlords, and businesses may all benefit from an education series on parking in Oak Park. Specifically for this area, these seminars would create an opportunity to find additional off-street parking and a platform for those spaces to be rented online.

Supporting Documentation Is Attached



Legend

- On-street permit parking zone
- On-street parking area*
- Off-street lot

* This map is a graphic representation of the parking areas. Always park in areas designated by signs in the field and follow applicable guidelines.



Parking Information Guide

LOT#	LOCATION	METERS/ PAY BY SPACE	24- HOUR	DAY	NIGHT
1	Euclid N. of Harrison	✓	✓		✓
2	North Blvd E. of Oak Park		✓	✓	✓
3	Marion S. of Lake	✓			
7	Chicago E. of Harlem	✓			✓
9	North Blvd E. of Harlem	✓			✓
9T	Lake E. of Harlem	✓			
10	North Blvd W. of Forest	✓			
11	Wesley N. of Harrison				✓
13	Lake W. of Grove	✓	✓		✓
15	Oak Park S. of Garfield	✓	✓		✓
16	Lake W. of Kenilworth	✓	✓		✓
18	Ontario E. Harlem	✓	✓	✓	✓
19	OPRF High School				✓
22	Lake W. of Elmwood				✓
24	Taylor N. of Madison	✓	✓		
25A	Adams W. of Austin		✓		
25F	Fillmore W. of Austin		✓		
25I	Iowa W. of Austin		✓		
25P	Pleasant W. of Austin		✓		
25S	Superior W. of Austin		✓		
25V	Van Buren W. of Austin		✓		
29	Garfield E. of Euclid		✓		
30	Austin N. of Jackson		✓		
31	Austin N. of Randolph		✓		
33	Humphrey S. of Harrison		✓		
34	South Blvd E. of Ridgeland	✓			✓
35	South Blvd W. of Austin	✓	✓		
36	Washington W. of Austin		✓		
37	Grove N. of Roosevelt		✓		
39	Harvard W. of Austin		✓		
44	W. Side of Highland S. of Madison		✓	✓	
45	Madison W. of Cuyler				✓
46	Cuyler S. of Washington		✓		✓
47	Lombard S. of Madison				✓
48E	Cuyler S. of Madison (east side)				✓
48W	Cuyler S. of Madison (west side)		✓		
50N	Humphrey N. of Lake	✓			
51N	Humphrey N. of Chicago	✓			✓
51S	Humphrey S. of Chicago	✓			✓
53	Garfield E. of East		✓		
54	Flourney E. of Taylor		✓		
55	North Blvd E. of Kenilworth		✓	✓	
56	Madison W. of Harvey				✓
58	Madison E. of Highland		✓		
59	Kenilworth S. of South Blvd		✓		
61	North Blvd W. of Austin		✓	✓	
62E	Harrison W. of Elmwood				✓
62W	Harrison W. of Gunderson				✓
64	South Blvd W. of Taylor		✓		
65	South Blvd & Lombard		✓		
66	North Blvd, Bishop to East		✓	✓	✓
66N	North Blvd, East of Euclid to Bishop	✓			
67	Lombard S. of Lake				✓
68	Austin N. of Harrison		✓		
69	Austin N. of Chicago	✓	✓	✓	✓
70	East Ave S. of Washington		✓		
71E	Euclid N. of Madison				✓
71W	Euclid N. of Madison				✓
72	Garfield W. of Clinton				✓

LOT#	LOCATION	METERS/ PAY BY SPACE	24- HOUR	DAY	NIGHT
73	Humphrey N. of Madison	✓	✓		✓
74	Madison E. of Lombard				✓
79	Roosevelt W. of Euclid				✓
81	Marion N. of Randolph				✓
82	Humphrey N. of Washington				✓
83	Taylor N. of Washington				✓
85	Gwendolyn Brooks School				✓
86	Scoville N. of Washington				✓
87	Harrison E. of East				✓
90	Thomas W. of Austin		✓		
91	Wesley N. of Madison				✓
92	Lombard N. of Madison	✓			✓
93	Taylor S. of Harrison	✓			
94	Wisconsin S. of Madison	✓			
96	North Blvd W. of Oak Park		✓	✓	✓
97	Washington E. of Ridgeland				✓
98	Harrison E. of Maple		✓		
99	Humphrey S. of North Ave	✓	✓		✓
100	Clinton N. of Madison				✓
101	Humphrey S. of Lake		✓		
102	Lombard N. of Roosevelt	✓			✓
103	Lyman S. of Harrison		✓		
104	Harvey N. of Madison	✓	✓		✓
107	Cuyler N. of Madison				✓
108	Harlem S. of South Blvd	✓			✓
109	Scoville S. of Washington	✓			✓
110	Scoville N. of Madison		✓		
111	Greenfield W. of Austin		✓		
112	North Blvd N. bet. Cuyler @ Ridgeland	✓		✓	✓
114	Asutin S. of Harrison		✓		✓
115	South Blvd & Maple		✓		
116	Madison E. of Oak Park				
118	Holley Ct & Marion	✓			
SB01	South Blvd W. of Humphrey		✓	✓	✓
SB02	South Blvd W. of Harvey	✓	✓	✓	✓
SB03	South Blvd Ridgeland to Elmwood	✓	✓	✓	✓
SB04	South Blvd Elmwood to East	✓	✓	✓	✓
SB05	South Blvd East to Wesley		✓	✓	✓
SB6E	South Blvd Wesley to Euclid	✓			✓
SB06	South Blvd Euclid to Oak Park	✓	✓	✓	
SB07	South Blvd Oak Park to Kenilworth	✓	✓	✓	✓
SB08	South Blvd Kenilworth to Clinton	✓	✓	✓	
SB09	South Blvd Clinton to Home	✓			✓
SB10	South Blvd Home Ave to metered spaces				✓
NB10	North Blvd Forest to Grove	✓	✓	✓	
	Zones Y1-Z7				✓

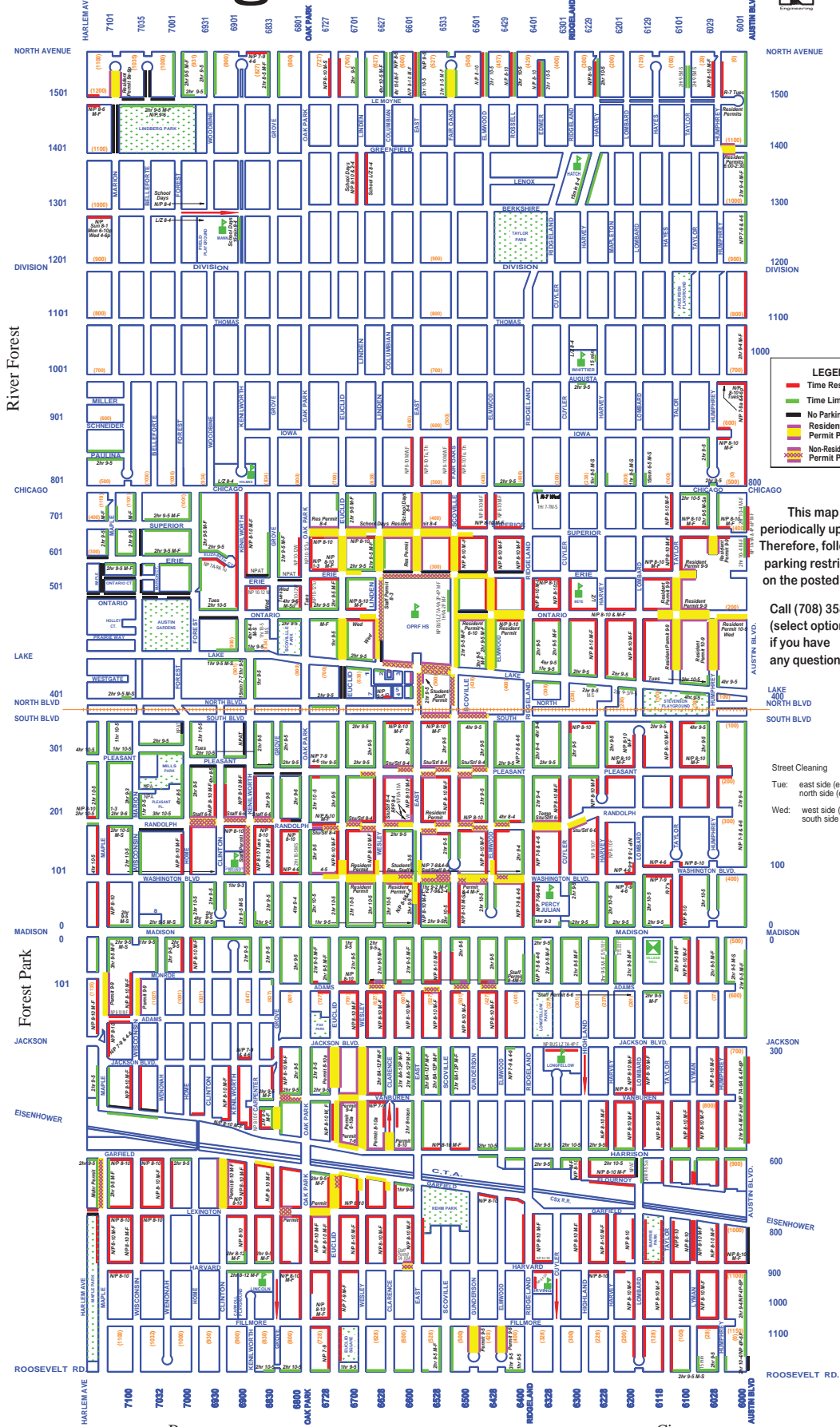
0317-1
5.2
2/2

0 Indicates lots available for temporary overnight passes. Call 708.358.7275 for more information.

Village of Oak Park



0317-1
5.3
1/1



LEGEND

- █ Time Restrictions
- █ Time Limits
- No Parking Anytime
- Resident Daytime Permit Parking
- Permit Parking
- Non-Resident Daytime Permit Parking

This map is periodically updated. Therefore, follow the parking restrictions on the posted signs.

Call (708) 358-7275 (select option 4) if you have any questions

Street Cleaning
Tue: east side (even)
north side (even)
Wed: west side (odd)
south side (odd)

Daytime Parking Restrictions

This map is periodically updated. Therefore, follow the parking restrictions on the posted signs.

Revised on 02/03/2016

Village Of Oak Park
Transportation Commission Agenda Item

Item Title: Continued Development of the Traffic Calming Toolbox
Review Date: <u>March 20, 2017</u>
Prepared By: <u>Jill Juliano</u>
Abstract (briefly describe the item being reviewed): Tonight's meeting is a continuation of the Transportation Commission's work plan item to develop a traffic calming toolbox for use to more effectively address traffic calming petitions that are brought before it.
Staff Recommendation(s): For tonight's meeting, the Commission will conduct 1) a final review of the traffic calming toolbox scoring table, 2) continue developing the list of traffic calming measures that could be included in the Village's toolbox to address issues detailed in the submitted petition as well as 3) establish objective criteria for use in evaluating the validity and severity of petitions that are brought before the Commission for review.
Supporting Documentation Is Attached

Memorandum

0317-1
6.2
1/2

Date: March 17, 2017

To: The Transportation Commission

From: Jill Juliano, Transportation Engineer JJ

Re: Continuation in the Development of a Traffic Calming Toolbox

Included in this agenda item are several items for review and consideration.

The first item is the pre-final traffic calming toolbox scoring table. The table is modified based on Commissioners' comments at the February 27, 2017 Transportation Commission meeting. See Exhibit 6.3 for a copy of this table.

Exhibit 6.4 is worksheets from the City of Centennial, Colorado Neighborhood Traffic Management Program Manual. The full manual can be found in the Neighborhood Traffic Management Program (NTMP) sub-directory of the Traffic Calming Toolbox directory on the ftp site.

The first worksheet is to determine if the block being considered meets the minimum eligibility threshold for a traffic calming measure. The second worksheet is an application prioritization form. Centennial staff prioritize all NTMP applications based on the Project Prioritization Score (PPS) as calculated on Worksheet 2 and proceed based on descending order of the prioritized applications. This is another method we may want to consider to determine whether a petition meets a minimum standard and then prioritize the specific traffic calming petition within the context of all traffic calming petitions received by the Village.

The next item is a table of possible traffic calming measures that could be included in the Village's toolbox to address the various traffic issues. After each measure, in parentheses is a one to three letter designation. This designation is for which NTMP or traffic calming toolbox document the measure is listed. PC = Placer County, A = Albuquerque, ITE = ITE Toolbox of Traffic Calming Measures. The measures from the Placer County and Albuquerque NTMP are included in the February 27, 2017 Transportation Commission agenda. In the second column of the table are any restrictions or issues noted about the particular measure or device. Staff is obtaining input from the Police Department, Fire Department and Public Works Department on each of these measures. This information will be provided at the April 24th Transportation Commission meeting.

The one measure (Canadian Design Half Closure) from the ITE toolbox is included in Exhibit 6.6. The second page in Exhibit 6.6 is an intersection bump-out or choker on a one way street (location: Balmoral Ave at Wayne Ave in Chicago - Andersonville) that is similar in shape to the Canadian design half closure.

Memorandum

0317-1

6.2

2/2

The measures in the table are grouped into Levels 1 through 4 based on the approximate amount of change to traffic flow. These are just initial groupings and can be revised based on Commission deliberations. This multi-level approach is found in the document “Establishing a Neighborhood Traffic Management Program – ASCE Webinar” found in the Traffic Calming Toolbox directory on the ftp site.

During this month’s meeting we will begin the discussion about which of these measures should be included the Village’s toolbox and confirm in which level the measure should be listed.

There are many resources in the Traffic Calming Toolbox directory on the ftp site. The Commission may wish to review documents from which certain exhibits have been made. Those documents are: 1) Placer County NTMP, 2) City of Albuquerque NTMP, 3) Centennial NTMP Manual, 4) ITE Toolbox of Traffic Calming Measures and Establishing a Neighborhood Traffic Management Program. Also located in the Toolbox directory are City of Chicago Safer Street Guides and Pedestrian Plan which provides examples and measures that are being considered locally. The DC DOT Traffic Calming Assessment Application within the Traffic Calming Toolbox directory has good information on the treatments and processing of applications.

Finally, there is the FHWA website has a free online resource, the Traffic Calming ePrimer. Here is the link to that site: https://safety.fhwa.dot.gov/speedmgt/traffic_calm.cfm . The eight modules have been PDF’d and placed in its own directory on the ftp site.

Please remember to bring your copy of the February 27, 2017 Transportation Commission agenda with you on Monday.

Measure	Maximum Number of Points	Criteria Detail																																																																																			
Crash History	20	1-3 correctible crashes in a 3 year period = 5 points 4-10 correctible crashes in a 3 year period = 10 points more than 10 correctible crashes in a 3 year period = 15 points any correctible crash involving injury to a pedestrian/cyclist = 5 points																																																																																			
Vehicle Speed	20	85th percentile speed is not over the speed limit = 0 points 85th percentile speed is 1 mph over the speed limit = 4 points 85th percentile speed is 2 mph over the speed limit = 8 points 85th percentile speed is 3 mph over the speed limit = 12 points 85th percentile speed is 4 mph over the speed limit = 16 points 85th percentile speed is 5 mph or more over the speed limit = 20 points outlier excessive speeding = 5 points																																																																																			
Vehicle Volume	20	ADT < 750 = 0 points ADT = 751 - 1,350 = 5 points ADT = 1,351 - 1,950 = 10 points ADT = 1,951 - 2,550 = 15 points ADT > 2,550 = 20 points																																																																																			
Pedestrian Traffic Generators	15	Any school, park, library, church, CTA station 2 to 3 blocks (1,320 to 1,980 ft.) away = 3 points Any school, park, library, church, CTA station one block (660 ft.) or less away = 5 points																																																																																			
Community Interest	15	Final Score = Base Score (+10 to +15 points) minus External Negative Support Score (-1 to -5 points) External Negative Score is from responses from outside of the affected petition zone. <table border="1" style="width: 100%; border-collapse: collapse;"> <thead> <tr> <th colspan="4">51% petitions</th> <th colspan="4">75% petitions</th> <th colspan="2">% of negative replies</th> <th>Subtract</th> </tr> </thead> <tbody> <tr> <td>51%</td><td>-</td><td>59%</td><td>= 10 points</td> <td>75%</td><td>-</td><td>78%</td><td>= 10 points</td> <td colspan="2">Less than 10 or 16 replies</td> <td>= - 0 points</td> </tr> <tr> <td>60%</td><td>-</td><td>68%</td><td>= 11</td> <td>79%</td><td>-</td><td>82%</td><td>= 11</td> <td rowspan="6" style="font-size: small; vertical-align: middle;">If at least 10 or 16 replies are received, subtract points based upon the percentage of replies that are negative</td> <td>1%</td><td>-</td><td>20%</td><td>= - 1 point</td> </tr> <tr> <td>69%</td><td>-</td><td>77%</td><td>= 12</td> <td>83%</td><td>-</td><td>86%</td><td>= 12</td> <td>21%</td><td>-</td><td>40%</td><td>= - 2</td> </tr> <tr> <td>78%</td><td>-</td><td>86%</td><td>= 13</td> <td>87%</td><td>-</td><td>90%</td><td>= 13</td> <td>41%</td><td>-</td><td>60%</td><td>= - 3</td> </tr> <tr> <td>87%</td><td>-</td><td>95%</td><td>= 14</td> <td>91%</td><td>-</td><td>94%</td><td>= 14</td> <td>61%</td><td>-</td><td>80%</td><td>= - 4</td> </tr> <tr> <td>96%</td><td>-</td><td>100%</td><td>= 15</td> <td>95%</td><td>-</td><td>100%</td><td>= 15</td> <td>81%</td><td>-</td><td>100%</td><td>= - 5 points</td> </tr> </tbody> </table>	51% petitions				75% petitions				% of negative replies		Subtract	51%	-	59%	= 10 points	75%	-	78%	= 10 points	Less than 10 or 16 replies		= - 0 points	60%	-	68%	= 11	79%	-	82%	= 11	If at least 10 or 16 replies are received, subtract points based upon the percentage of replies that are negative	1%	-	20%	= - 1 point	69%	-	77%	= 12	83%	-	86%	= 12	21%	-	40%	= - 2	78%	-	86%	= 13	87%	-	90%	= 13	41%	-	60%	= - 3	87%	-	95%	= 14	91%	-	94%	= 14	61%	-	80%	= - 4	96%	-	100%	= 15	95%	-	100%	= 15	81%	-	100%	= - 5 points
51% petitions				75% petitions				% of negative replies		Subtract																																																																											
51%	-	59%	= 10 points	75%	-	78%	= 10 points	Less than 10 or 16 replies		= - 0 points																																																																											
60%	-	68%	= 11	79%	-	82%	= 11	If at least 10 or 16 replies are received, subtract points based upon the percentage of replies that are negative	1%	-	20%	= - 1 point																																																																									
69%	-	77%	= 12	83%	-	86%	= 12		21%	-	40%	= - 2																																																																									
78%	-	86%	= 13	87%	-	90%	= 13		41%	-	60%	= - 3																																																																									
87%	-	95%	= 14	91%	-	94%	= 14		61%	-	80%	= - 4																																																																									
96%	-	100%	= 15	95%	-	100%	= 15		81%	-	100%	= - 5 points																																																																									
Bike Routes / Non-Bike Routes	10	Not identified as a proposed bike route/boulevard* = 3 points Identified as an alternative bike route/boulevard* = 6 points Identified as a bike route/boulevard* = 10 points * Per the VOP Bike Plan 2008 or 2015 VOP Bike Plan Addendum																																																																																			
Maximum Score	100	Minimum score necessary to submit petition to the Transportation Commission for review and recommendation = 25 points																																																																																			

WORKSHEET 1
Minimum Threshold Determination

Roadway Segment Being Considered: _____

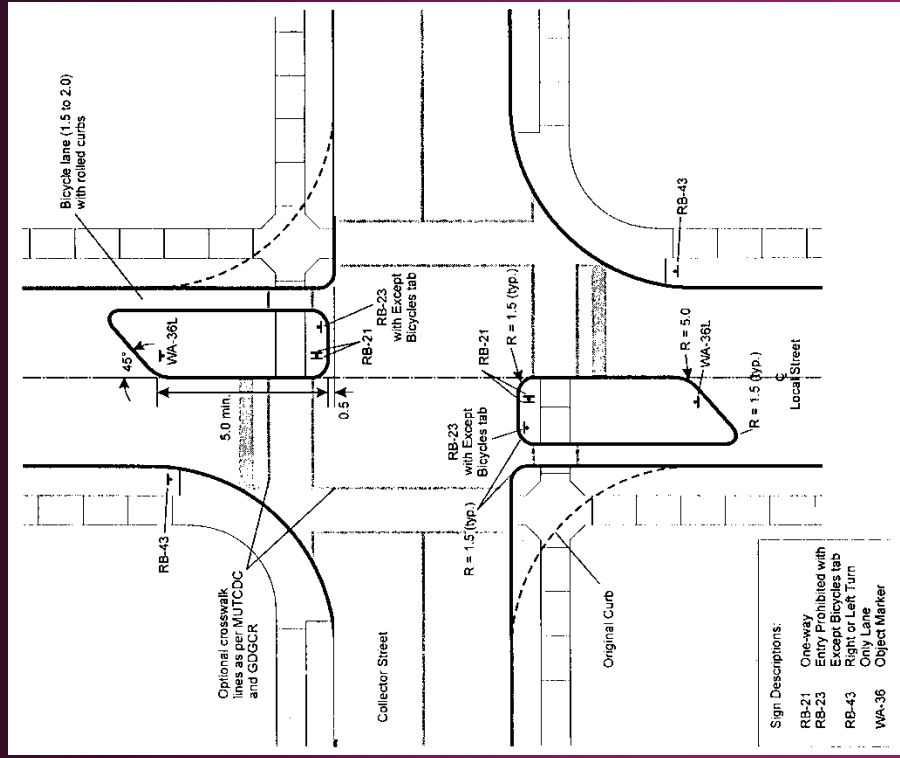
- | | |
|--|--|
| 1. Roadway Type | Residential Collector _____ |
| | Local Access _____ |
| 2. Weekday 24-hour traffic volume, both directions | _____ |
| 3. Posted or regulatory speed limit (mph) | _____ |
| 4. 85 th percentile speed (mph) and direction of travel | _____ |
| 5. Is weekday 24-hour traffic volume greater than 500,
or, is there 20% or greater cut-through volume? | Yes _____ Go to 6
No _____ Go to 9 |
| 6. Is 85 th percentile speed 7 mph or more over the speed limit? | Yes _____ Go to 10
No _____ Go to 7 |
| 7. Is a school, park, trail crossing, recreation center/clubhouse
or other public facility present along the roadway? | Yes _____ Go to 8
No _____ Go to 9 |
| 8. If "yes" to Question #7 above, is 85 th percentile speed
5 mph or more over the speed limit? | Yes _____ Go to 10
No _____ Go to 9 |
| 9. Are there three or more correctable traffic accidents per year? | Yes _____ Go to 10
No _____ Go to 11 |
| 10. YES _____ | This roadway IS ELIGIBLE for Phase 2 and Phase 3 of the Neighborhood
Traffic Management Program |
| 11. NO _____ | This roadway IS NOT ELIGIBLE for Phase 2 and Phase 3 of the
Neighborhood Traffic Management Program |

WORKSHEET 2
Application Prioritization

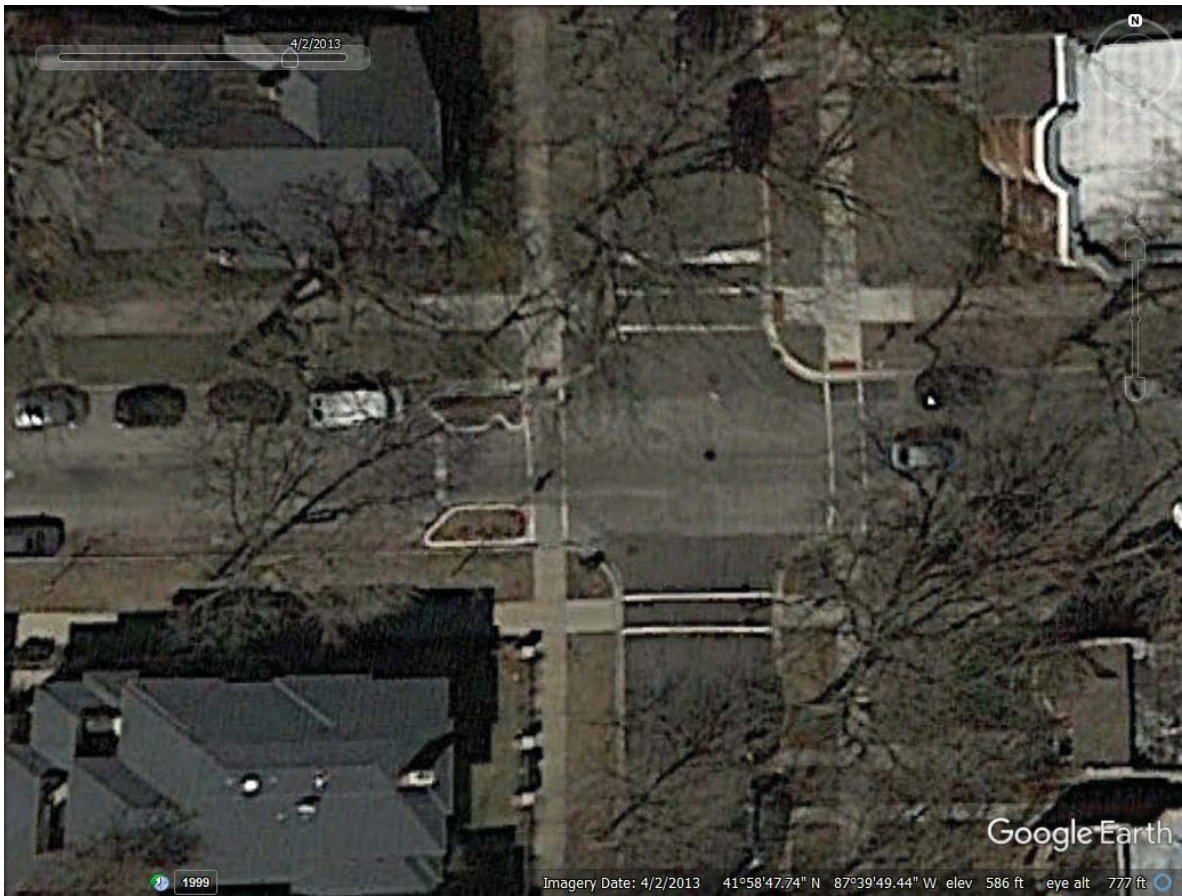
	Total Max	Project Score
1 Traffic Speeds	20	<input type="text"/>
<i>85th percentile speed > 12 mph over the speed limit</i>	20	
<i>85th percentile speed > 10 mph over the speed limit</i>	10	
<i>85th percentile speed > 9 mph over the speed limit</i>	8	
<i>85th percentile speed > 8 mph over the speed limit</i>	6	
<i>85th percentile speed > 7 mph over the speed limit</i>	4	
<i>85th percentile speed > 5 mph over the speed limit</i>	2	
2 Traffic Accident History	20	<input type="text"/>
<i>Any correctable accident involving injury to a pedestrian or bicyclist</i>	20	
<i>or, > 5 correctable accidents per identified area in a year period</i>	15	
<i>or, 2 to 4 correctable accidents per identified area in a year period</i>	10	
<i>or, 1 accident per identified area in a one year period</i>	5	
3 Traffic Volumes	20	<input type="text"/>
<i>≥ 3,000 vpd</i>	20	
<i>2,000-2,999 vpd</i>	15	
<i>1,500-1,999 vpd</i>	10	
<i>1,000-1,499 vpd</i>	5	
4 Pedestrian Generators	15	<input type="text"/>
<i>per school</i>	10	
<i>per recreation facility or club house</i>	8	
<i>per path/recreation trail crossing</i>	6	
<i>per other public facilities that generate pedestrians</i>	4	
5 Cut-through Traffic Pattern	12	<input type="text"/>
<i>≥ 25% cut through traffic</i>	12	
<i>10.0 - 24.9% cut-through traffic</i>	8	
<i>5.0 - 9.9% cut-through traffic</i>	4	
6 Number of houses facing the street (both sides)	8	<input type="text"/>
<i>≥ 15 per quarter mile</i>	8	
<i>10.0 - 14.9 per quarter mile</i>	6	
<i>6.0 - 9.9 per quarter mile</i>	4	
<i>3.0 - 5.9 per quarter mile</i>	2	
TOTAL POSSIBLE	95	
APPLICATION SCORE		<input type="text"/>

Types of Traffic Calming Measures	Restriction / Issue
Level 1 - No Traffic Flow Changes	
Targeted Speed Enforcement (PC, A)	
Speed Radar Trailer (PC, A)	
Speed Feedback Sign (PC, A)	
Centerline / Edgeline Lane Striping (PC, A)	
Optical Speed Bars / Speed Reduction Markings (PC, A)	
Signage (PC)	
Speed Limit Signage (A)	
Speed Legend (PC)	
Speed Pavement Markings (A)	
High Visibility Crosswalks (PC, A)	
Educational Community Involvement (A)	
Level 2 - Some Traffic Flow Changes	
Sign Turn Restrictions (A)	
Centerline Botts Dots / Raised Pavement Markers (PC, A)	Staff does not recommend this device.
Angled Parking (PC)	
Parking Strategies (A)	
Textured Pavement (PC)	
Rumble Strip (PC)	Noise and maintenance problems
Level 3 - Significant Traffic Flow Changes	
Neckdown / Bulbout (PC, A)	
Center Island Narrowing / Pedestrian Refuge (PC, A)	
Two-Lane Choker (PC, A)	
One-Lane Choker (PC, A)	Possible issue, need further investigation
Traffic Circle (PC, A)	
Roundabout (Single-Lane) (PC, A)	No location with physical room for this device
Chicane (PC, A)	
Lateral Shift (PC, A)	
Realigned Intersection (PC, A)	
Medians & Partial Medians (A)	
Speed Hump (PC, A)	OK for alley only per Village policy
Speed Lump (PC)	No, not effective based on VOP experience
Speed Cushion (PC)	Same as Lump only portable
Speed Table (PC, A)	Village staff concern about effects on emergency operations
Speed Kidney (A)	Possibly okay, need further investigation
Raised Crosswalk (PC, A)	
Raised Intersection (PC, A)	
Level 4 - Street Closures	
Full Closure (PC, A)	Temporary moratorium
Partial Closure (PC, A)	Temporary moratorium
Canadian Design Half Closure / Semi-Diverter (ITE)	
Diagonal Diverter (PC, A)	
Median Barrier (PC, A)	
Forced Turn Island (PC, A)	
Two-Way Street Conversion (A)	
One-Way Street Conversion	
One-Way Couplet Conversions (A)	

Canadian Design Half Closure/Semi-Diverter



Source: Draft *Canadian Guide to Neighbourhood Traffic Calming*, 1998, Copyright Transportation Association of Canada. Used with permission



Parking and Traffic Action Item Activity Summary								Grayed out row indicates the item has been completed and closed
Project No.	Date Opened	Opened By	Date Closed	Petition mailed out on	Petition received on	Action Item Description	Name Address Phone Number	Commission Recommendation Village Board Action Final Disposition
1334	03/01/16	JAJ				Resident concern times Alcuin Montessori deploys barricades consistent with adopted resolution		No Trans Com involvement necessary
1335	03/08/16	JAJ	03/11/16			Resident request for SPEED LIMIT sign on 900 block of Linden		No Trans Com involvement necessary TWO #12425 & 12426 written on 03/09/2016
1336	03/10/16	JAJ				Resident concern regarding speeding vehicles on the 1150 block of S Kenilworth		
1337	03/21/16	JAJ	10/18/16			Speeding and volume concerns on Home Ave between South Blvd and Randolph St		No Trans Com involvement necessary TWO #12509 written on 10/31/2016 TWO # 12506 written on 10/18/2016
1338	03/30/16	MJK		03/31/16		Upgrade from 2-way to all-way STOP signs at Wesley & Fillmore		
1339	04/05/16	JAJ		04/05/16	05/10/16	Petition for STOP signs on Grove Avenue at Berkshire Street		VBOT directed staff to install temporary calming device, 6 months later collect data & bring back for review.
1340	04/11/16	MJK		04/11/16		Petition for STOP signs on Fair Oaks Avenue at Berkshire Street		
1341	04/21/16	JAJ		04/21/16	12/19/16	Petition for alley speed bumps in east-west alley south of North Ave west of East Ave		No Trans Com involvement necessary
1342	04/25/16	MJK		04/25/16		Petition for stop signs at Linden and Thomas		
1343	04/26/16	JAJ		04/29/16		Petition for STOP signs at Adams and Scoville		
1344	04/07/16	JAJ				Alley Issues due to delivery trucks at Jewel on Roosevelt Road		no Trans Com involvement necessary
1345	04/28/16	JAJ	07/22/16	04/30/16	05/23/16	Request for KKAD25 banners on 1100 / 1200 blocks of N Euclid		TWO #12470 & #12471 written on 07/22/2016
1346	05/23/16	JAJ				Request for memorial street sign for his daughter		
1347	05/23/16	JAJ				Request for convex mirror on end of alley		
1348	05/27/16	JAJ	10/22/16			Request for signal timings, crash data and traffic data for Madison St (part of Madison St Road Diet)		No Trans Com involvement necessary Data provided to KLOA.
1349	06/01/16	JAJ	08/03/16	06/01/16	06/02/16	Request for KKAD25 banners on the 900 block of N Lombard Ave		No Trans Com involvement necessary TWO #12479 written on 08/03/2016
1350	06/02/16	JAJ				Request for cul-de-sac on 1200 block of N Euclid (result of US Bank modifications)		
1351	06/03/16	JAJ	07/28/16			Jackson Blvd Traffic Issues (speeds & volumes)		No Trans Com involvement necessary Item completed by MJKoperniak RRFB equipment installed by VOP forces
1352	06/06/16	JAJ				Request for all-way STOP signs at intersection of Erie and Grove		
1353	06/09/16	JAJ				Request for cul-de-sac petition on the 1150 block of S Humphrey		
1354	06/20/16	JAJ		07/14/16		Petition for alley speed bumps in north-south alley north of Lake St east of Oak Park Ave		No Trans Com involvement necessary
1355	06/29/16	JAJ	07/05/16			Request for NO OUTLET sign on Rossell Ave at North Ave		No Trans Com involvement necessary TWO #12469 written on 07/05/2016
						Request for traffic calming across		

Parking and Traffic Action Item Activity Summary								Grayed out row indicates the item has been completed and closed
Project No.	Date Opened	Opened By	Date Closed	Petition mailed out on	Petition received on	Action Item Description	Name Address Phone Number	Commission Recommendation Village Board Action Final Disposition
1356	07/06/16	JAJ				Kenilworth medians between Division and North Ave		
1357	07/11/16	JAJ	10/31/16			Request for change in signage adjacent to 300 S Humphrey CDS		No Trans Com involvement necessary TWO #12510 written on 10/31/2016
1358	06/29/16	JAJ	02/11/17	07/13/16		Resident concerns about Marion/Erie intersection		TWO 12528 & 12532 written on 02/11/2017 See PF #1339 - for this item.
1359	07/14/16	JAJ		07/21/16		Requesting STOP signs at Berkshire & Grove		no Trans Com involvement necessary TWO #12497 written on 10/05/2016
1360	07/14/16	JAJ	10/05/16	07/15/16	09/08/16	Request for speed bumps in alley adjacent to Oak Park Ave & Jackson Blvd		no Trans Com involvement necessary TWO #12497 written on 10/05/2016
1361	07/15/16	JAJ				Concerns regarding Harlem/Ontario intersection.		No Trans Com involvement necessary
1362	07/28/16	JAJ				Data for consultant for North Ave report		No Trans Com involvement necessary
1363	07/29/16	JAJ				Issues with alley behind Lake St		No Trans Com involvement necessary
1364	08/01/16	JAJ				Traffic issues on Marion St south of South Blvd		No Trans Com involvement necessary
1365	08/04/16	JAJ	08/05/16			Request for existing traffic data on Oak Park Ave near residence		No Trans Com involvement necessary
1366	08/08/16	JAJ				Interested in traffic speed reduction options for 1100 block of Home Ave		
1367	08/23/16	JAJ		08/24/16	10/19/16	Request for STOP signs at Harvey & LeMoyne		
1368	08/29/16	MJK				Resident request for flashing lights on Ridgeland at Ontario		
1369	08/31/16	MJK		08/31/16		request to install stop sign at Erie and Taylor		potential Trans Com item
1370	08/31/16	MJK				morning traffic controls at Madison and East caused by Fenwick trafficdeal with		
1371	09/01/16	JAJ				concerns about safety at Lombard & Superior (2 accidents in a week's time)		
1372	08/29/16	JAJ				parking and traffic issues on the 200 to 400 blocks of N Kenilworth		
1373	09/06/16	JAJ		09/23/16	10/19/16	Request for STOP sign petition for Forest /Greenfield intersection (near Lindberg Park)		
1374	09/06/16	JAJ				requesting multiple crosswalks / signage on Chicago between OPA & Ridgeland - for peds & OPRF kids		
1375	09/08/16	JAJ	09/08/16			Request for NO PARKING HERE TO CORNER signage at the NW corner of Division & Kenilworth		no Trans Com involvement necessary TWO # 12494 written on 09/08/2016
1376	09/07/16	JAJ		09/28/16		Request for all-way STOP signs at Home/Lexington intersection		
1377	09/09/16	JAJ				Request for STOP sign petition for Kenilworth/Greenfield intersection		
1378	09/09/16	JAJ				Request for speed bumps in alley		

Parking and Traffic Action Item Activity Summary								Grayed out row indicates the item has been completed and closed
Project No.	Date Opened	Opened By	Date Closed	Petition mailed out on	Petition received on	Action Item Description	Name Address Phone Number	Commission Recommendation Village Board Action Final Disposition
1379	09/13/16	JAJ				Request for crosswalk on Ridgeland at Adams		
1380	09/14/16	JAJ				Request for enhanced safety at OPA/Van Buren crosswalk		
1381	09/14/16	JAJ		09/23/16	10/18/16	Petition for all-way STOP signs at East Ave & Division St intersection		
1382	09/21/16	JAJ				Request for additional SCHOOL ZONE signage at St Giles School		no Trans Com involvement necessary
1383	09/22/16	JAJ	09/22/16			Refresh crosswalk pavement markings at the Washington/Wisconsin intersection		no Trans Com involvement necessary SMO 30078 written on 09/22/2016
1384	09/21/16	JAJ				Reopening of Euclid/Harvard & Euclid/Fillmore STOP Sign petitions		formerly PF #1243 - no action in over 1 year.
1385	09/23/16	JAJ				Request for speed bump or cul-de-sac on 1150 block of Home Ave		
1386	09/27/16	MJK		09/27/16	10/06/16	requested stop sign petition for an unnamed location		
1387	09/29/16	JAJ		09/29/16		Request for speed bumps in the 1600 block of Austin alley		no Trans Com involvement necessary
1388	09/29/16	JAJ	10/04/16			Request for certain traffic control devices data for VBOT meeting		no Trans Com involvement necessary
1389	10/05/16	JAJ				Request for installation of crosswalk at an unnamed location.		no Trans Com involvement necessary
1390	10/10/16	JAJ	10/14/16			Request for safety information regarding red light cameras for discussions		no Trans Com involvement necessary replied to request on 10/14/2016
1391	10/12/16	JAJ				Request for traffic calming device on the 1200 block of Columbian Ave		
1392	10/12/16	JAJ				Request for cul-de-sac petition on the 1200 block of N Taylor		
1393	10/12/16	JAJ	10/12/16			Request for CROSS TRAFFIC DOES NOT STOP plaque on East Ave STOP signs at Division St		no Trans Com involvement necessary TWO #12503 written on 10/12/2016
1394	10/12/16	JAJ	10/24/16			Request for additional barricade to block off alley by Ascension School		no Trans Com involvement necessary Responded to request & provided options
1395	10/24/16	JAJ				Request for in-street pedestrian crossing signage on Washington at Kenilworth		no Trans Com involvement necessary
1396	10/21/16	JAJ				Issues with pedestrian push buttons in downtown Oak Park		no Trans Com involvement necessary
1397	10/21/16	JAJ				Concerns about Washington Blvd at Kenilworth intersection (vehicle & pedestrian interaction)		
1398	11/02/16	JAJ	11/10/16			Request for NO LEFT TURN sign for NB Maple St at Chicago Ave during holiday season		no Trans Com involvement necessary
1399	11/04/16	JAJ		11/04/16		Request for all-way STOP signs at Wesley & Fillmore		
1400	11/04/16	JAJ	02/11/17			Request for all-way STOP signs at Erie & Marion		TWO 12528 & 12532 written on 02/11/2017

Parking and Traffic Action Item Activity Summary								Grayed out row indicates the item has been completed and closed
Project No.	Date Opened	Opened By	Date Closed	Petition mailed out on	Petition received on	Action Item Description	Name Address Phone Number	Commission Recommendation Village Board Action Final Disposition
1401	11/09/16	JAJ		11/09/16		Petition for STOP signs at the intersection of Cuyler & Iowa		
1402	11/28/16	JAJ		11/29/16		Request for KKAD25 banners on block		no Trans Com involvement necessary
1403	11/29/16	JAJ		11/29/16		Request for alley speed bumps in adjacent north-south alley		no Trans Com involvement necessary
1404	12/01/16	MJK		12/01/16	01/30/17	request traffic calming device on 1200 Linden block		
1405	12/01/16	JAJ	12/02/16			Request for NO OUTLET sign on North Ave at Fair Oaks		no Trans Com involvement necessary
1406	12/15/16	JAJ	12/19/16			Resident complaint of back up of traffic on Chicago Ave at Ridgeland Ave intersection		TWO #12507 written on 12/02/2016 no Trans Com involvement necessary Adjusted timing via Centracs, responded to resident
1407	12/29/16	JAJ				Request for signage to prohibit blocking of walkway		no Trans Com involvement necessary
1408	12/30/16	JAJ				Concern about North Blvd & Forest Ave intersection		no Trans Com involvement necessary
1409	12/30/16	JAJ	01/05/17			Request for warning signage for 1200 Woodbine speed table		no Trans Com involvement necessary TWO # 12514 written on 01/05/2017
1410	01/17/17	JAJ	02/08/17			Vehicle & pedestrian traffic data collection for the intersection of Jackson Blvd & Wesley Ave		no Trans Com involvement necessary Data provided to Village Engineer
1411	01/25/17	JAJ				Request for crosswalk markings on Chicago Ave at Grove Ave		no Trans Com involvement necessary
1412	02/01/17	JAJ	02/13/17			Issues with traffic in alley Marion to Forest 1 block N of Lake St		no Trans Com involvement necessary TWO #12534 was written on 02/13/2017
1413	02/03/17	JAJ				Request for in-street pedestrian crossing signs / crosswalk markings on Oak Park Ave at Erie St		
1414	02/06/17	JAJ				Request for BLIND PERSON warning signage		no Trans Com involvement necessary
1415	01/30/17	JAJ				Chicago/Ridgeland traffic signal timing is off since construction ended		no Trans Com involvement necessary
1416	02/06/17	JAJ				Request for crosswalk sign on Jackson Blvd between Oak Park Ave & Carpenter Ave		no Trans Com involvement necessary
1417	02/06/17	MJK				Request for sign to prohibit NB OPA traffic from blocking parking lot entrance at North Ave traffic signal		no Trans Com involvement necessary
1418	02/09/17	JAJ				Crash at Erie Street & Grove Ave, request for all-way STOP signs at intersection		
1419	02/09/17	JAJ				Crosswalk markings on Randolph St west of Maple St		no Trans Com involvement necessary
1420	02/13/17	JAJ	02/17/17			Request for various petitions for the 500 block of N Taylor Ave		Item referred to Police Dept
1421	03/07/17	JAJ				Request for NPBS at alley access 300 block of S Maple (both Washington & Randolph)		no Trans Com involvement necessary