



October 9, 2020

**COVID-19 Status Report  
Oak Park Village Board of Trustees**

To: Village President and Village Board of Trustees

Fr: Lisa Shelley, Deputy Village Manager

The memo is a means to share a brief summary of information regarding Village of Oak Park operational activities in response to COVID-19. In most cases, formal public guidance or employee guidance has been publicly disseminated via the Village website or Village social media channels.

*The issuance of the Status Reports will be increased to Mondays, Wednesdays and Fridays in response to the slight uptick during this past seven day period.*

**New Public Health Guidance**

The Village of Oak Park Department of Public Health received notification of the following new COVID-19 cases; since last reported:

<u>Date</u>	<u># of Cases</u>	<u>Age of Cases</u>
October 8 (Thursday)	3	30s to 50s
October 9 (Friday)	7	<20s to 40s

Excluding individuals for which street addresses are not yet determined, the State of Illinois reports a total of seven hundred fifty-eight (758) total Oak Park COVID-19 cases. It is important to note that as patient tracking and case follow-up occurs, individuals listed within the number of Oak Park cases reported may change depending on residency confirmation.

The Oak Park Department of Public Health is notified of positive tests as established by state and local public health protocol. Because of privacy laws, no additional information can be released about the individuals. It is noted, that privacy precludes location information regarding individuals tested to anyone other than Public Health Officials and First Responders.

The Oak Park Department of Public Health is working closely with officials from the Illinois Department of Public Health (IDPH), investigating and notifying anyone who may have had exposure to the individual who tested positive for COVID-19. Local public health officials, hospitals and first responders are following protocols consistent with the latest guidance from the Centers for Disease Control and Prevention (CDC).

**Cases related to Long-Term Care and Assisted Living Facilities**

Public Health Director Charley reports no update since the last testing bulletin.

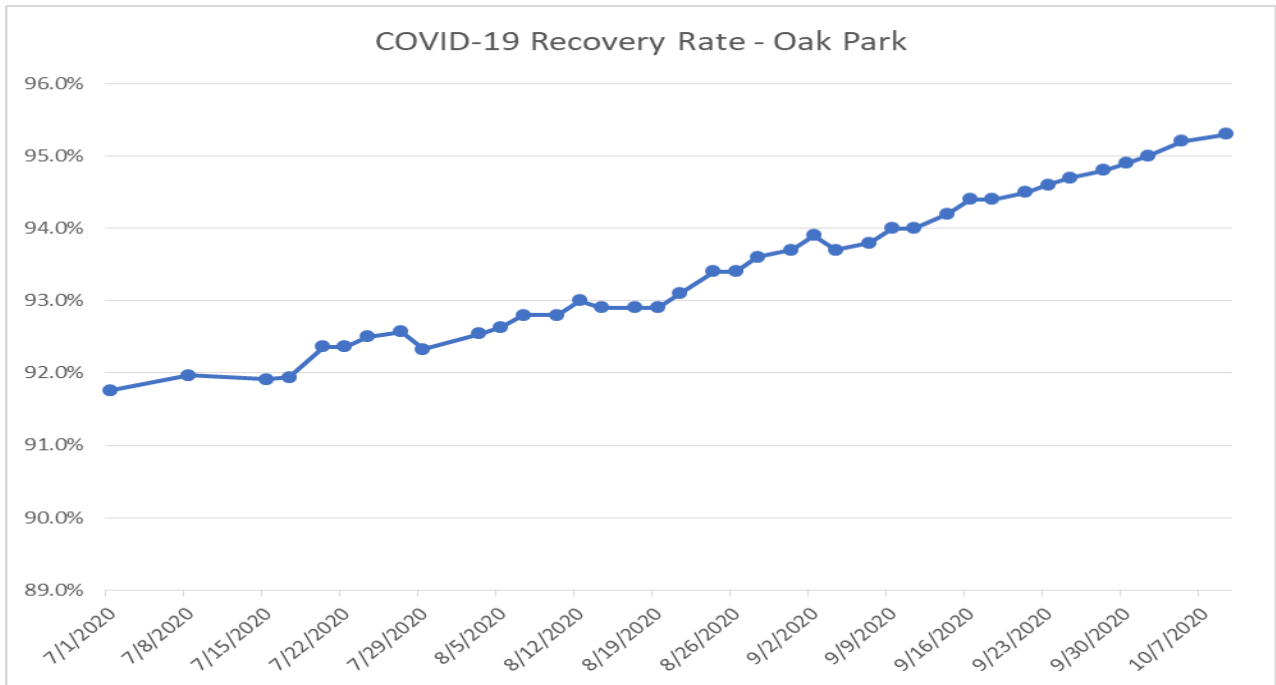
Facility Name	# of Resident Cases	# of Resident Deaths	# of Staff Cases
Belmont Village of Oak Park	2	2	5
Berkeley Nursing & Rehab Center	4	3	1
Brookdale Oak Park	8	1	14
Oak Park Arms	6	1	4
Oasis of Oak Park	23	12	6

**Public Health Data**

Public Health Director Charley has shared the following data related to COVID-19.

“New cases per 100,000 People”. This metric looks at the number of recent COVID-19 cases per 100,000 people to describe the potential number of people who are currently ill and may be infectious. This is the number of new cases reported by IDPH in the previous week. Calculated as a rate = [Village of Oak Park case count for 7 days] / [Village population] x100,000.

- Oak Park rate: 54 /100,000
- Cook County rate: 98/100,000 (9/27/2020 Through 10/3/2020)
- Target for County-level data: Cases for the week are fewer than 10 or the rate is fewer than 50 cases per 100,000 people
- Warning for County-level data: New case rate is greater than 50 cases per 100,000 people



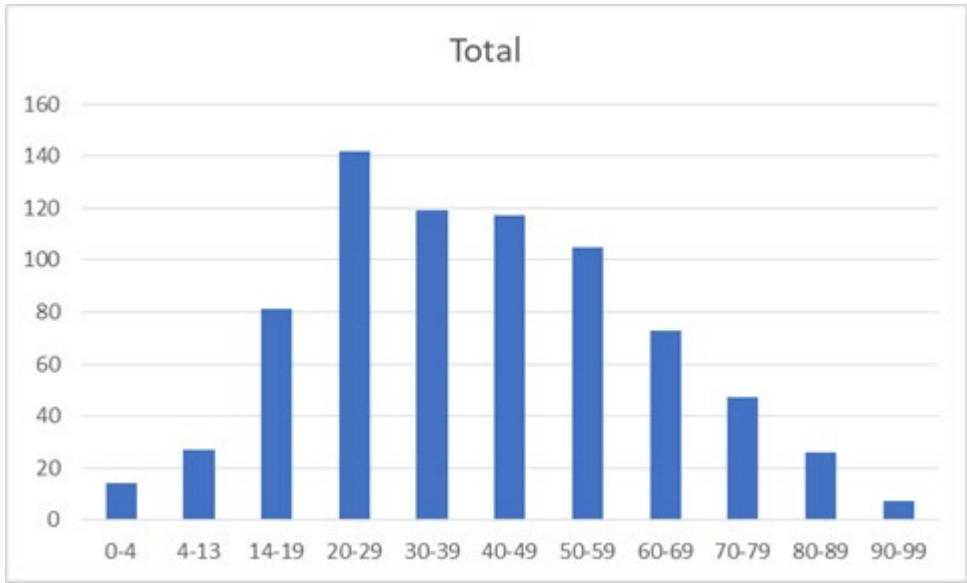
**RECOVERY RATE – OAK PARK**

Date	Percent
07/15/2020	91.9%
08/03/2020	92.5%
09/02/2020	93.9%
10/02/2020	95%
10/05/2020	95.2%
10/09/2020	95.3%

**AGE RANGE DATA – OAK PARK**

Age Range	Total	% of Cases
0-4	14	1.8%
4-13	27	3.6%
14-19	81	10.7%
20-29	142	18.7%
30-39	119	15.7%
40-49	117	15.4%
50-59	105	13.9%
60-69	73	9.6%
70-79	47	6.2%
80-89	26	3.4%
90-99	7	0.9%

Total	758
-------	-----



**Number and percent of cases prior to July 1 and July 1 and after**

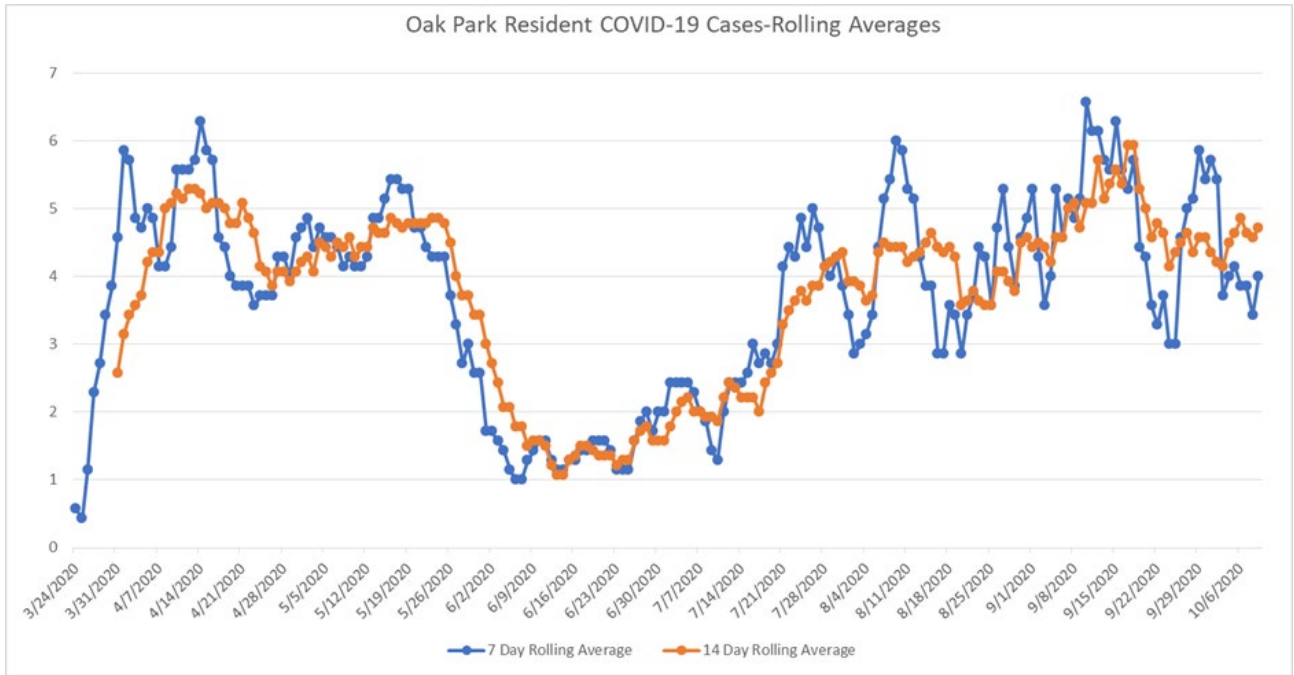
Age Range	Total	% of Cases
0-4	3	0.9%
4-13	4	1.2%
14-19	6	1.7%
20-29	50	14.5%
30-39	57	16.5%
40-49	59	17.1%
50-59	58	16.8%
60-69	44	12.8%
70-79	34	9.9%
80-89	23	6.7%
90-99	7	2.0%
Total	345	

Age Range	>=07/01/20	% of Cases
0-4	11	2.7%
5-13	23	5.6%
14-19	75	18.2%
20-29	92	22.3%
30-39	62	15.0%
40-49	58	14.0%
50-59	47	11.4%
60-69	29	7.0%
70-79	13	3.1%
80-89	3	0.7%
90-99	0	0.0%
Total	413	

Age Range	% of Cases <07/01/20	% Cases >=07/01/2020	Calculated Difference	% difference
<b>0-4</b>	0.9%	2.7%	1.8%	<b>101.5</b>
<b>5-13</b>	1.2%	5.6%	4.4%	<b>131.1</b>
<b>14-19</b>	1.7%	18.2%	16.4%	<b>165.0</b>
20-29	14.5%	22.3%	7.8%	<b>42.3</b>
30-39	16.5%	15.0%	-1.5%	-9.6
40-49	17.1%	14.0%	-3.1%	-19.6
50-59	16.8%	11.4%	-5.4%	-38.5
60-69	12.8%	7.0%	-5.7%	-58.0
70-79	9.9%	3.1%	-6.7%	-103.2
80-89	6.7%	0.7%	-5.9%	-160.7
90-99	2.0%	0.0%	-2.0%	-200.0

**7 & 14 DAY ROLLING AVERAGES (CASES/DAY) – OAK PARK**

- 7 day: 4
- 14 day: 4.7



## 7 & 14 DAY ROLLING AVERAGES (CASES/DAY) – STATE OF ILLINOIS

- 7 day: 2267
- 14 day: 2116

